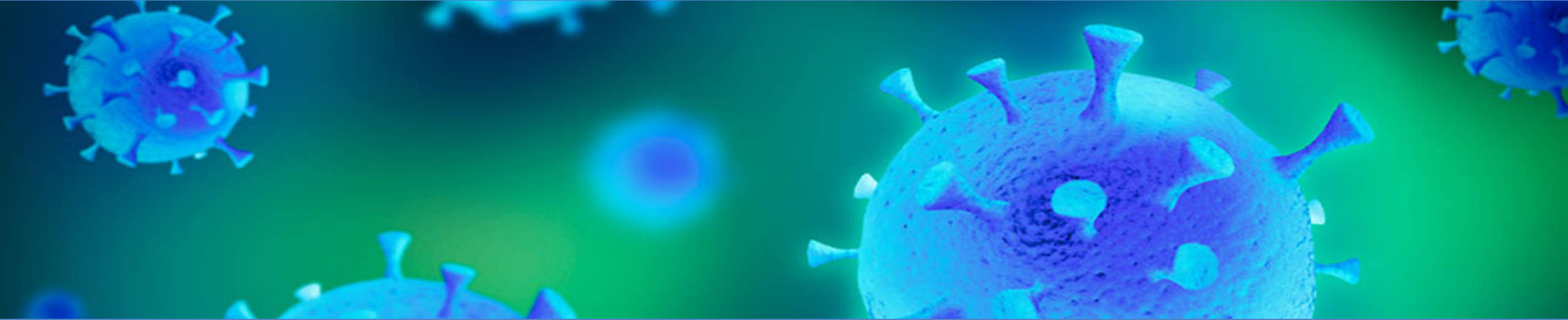


# VCHIP / CHAMP / VDH COVID-19 UPDATES



*Wendy Davis, MD FAAP - Senior Faculty, Vermont Child Health Improvement Program, UVM*  
*Breena Holmes, MD FAAP – VCHIP Senior Faculty & Physician Advisor, MCH Division, VDH*  
*October 23, 2020*




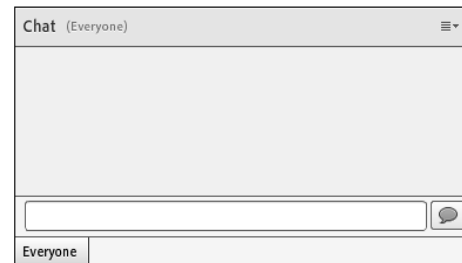
# Technology Notes

**1) All participants will be muted upon joining the call.**

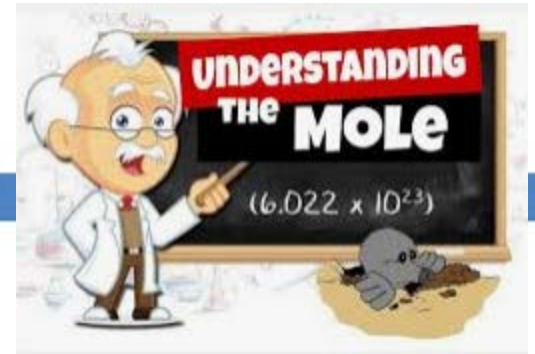
**If you dialed in or out, unmute by pressing #6 to ask a question (and press \*6 to mute).**

Presenters: Please avoid the use of speakerphone and make sure your computer speaker is muted if you dialed in via phone.

**2) To ask or respond to a question using the *Chat* box, type your question and click the  icon or press Enter to send.**



# Overview



- Celebrating **National Mole Day**
  - (October 22) **National Make a Dog's Day** (Subaru); October is **Adopt a Shelter Dog Month**
- *Reminder: weekly event schedule*
  - **VCHIP/CHAMP/VDH calls: Mon/Wed/Fridays**; Governor's Media Briefings Tues/Fri; VMS call with Commissioner Levine **Thursday**
- Situation, VDH, CDC updates; media briefing
- Practice Issues: ***Friday Potpourri***
- Q & A, Discussion



*[Please note: the COVID-19 situation continues to evolve very rapidly – so the information we're providing today may change quickly]*

# Situation update



Total Cases

**2,016**

28 New

Currently Hospitalized

**1**

Hospitalized Under Investigation

**2**

Total People Recovered

**1,723**

Deaths

**58**

People Tested

**182,943**

Travelers Monitored

**565**

Contacts Monitored

**78**

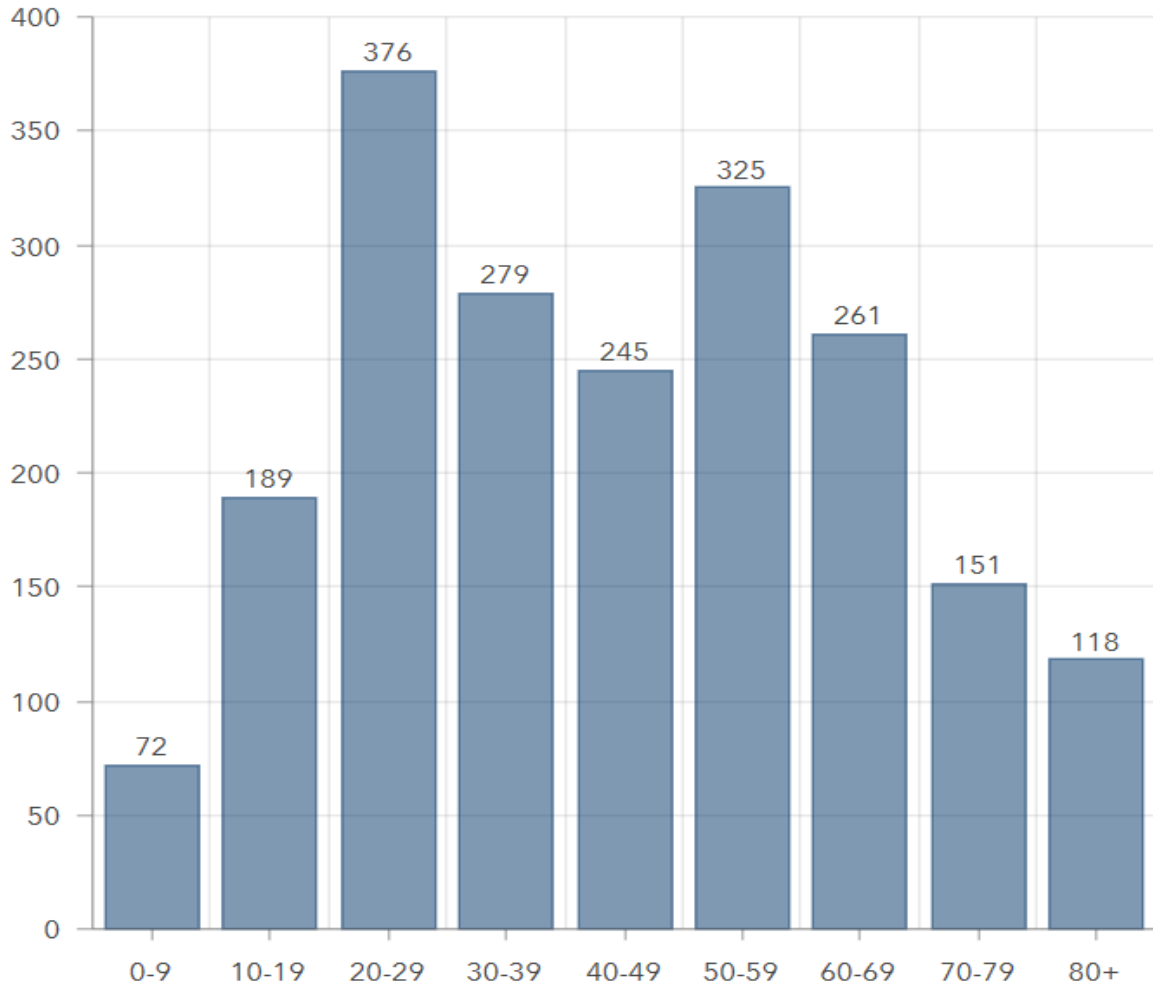
People Completed Monitoring

**9,888**

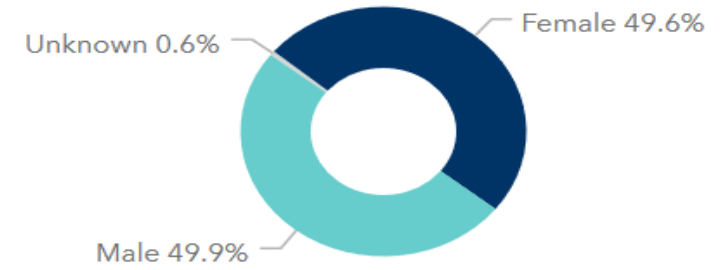
- **11 days** until Election Day! **#VoteKids**
  - 47.1 million ballots cast to date
- U.S.: 8.4 million+; 223,023 deaths
  - <https://www.nytimes.com/interactive/2020/us/coronavirus-us-cases.html> (updated 10/23/20)
  - Oct. 22, 2020: **>75K cases** = 2<sup>nd</sup> highest daily total since onset
  - **1.1 million+ deaths worldwide**
  - **Seeking your feedback re: useful epi/surveillance data**
- **VDH Weekly Data Summary (10/16/20):**
  - <https://www.healthvermont.gov/sites/default/files/documents/pdf/COVID19-Weekly-Data-Summary-10-23-2020.pdf>
  - Overview, demographics, clinical, outbreaks, surveillance.
  - **Weekly Spotlight** – Lab Reporting: how the Health Department receives COVID-19 testing results from laboratories.

# Situation update

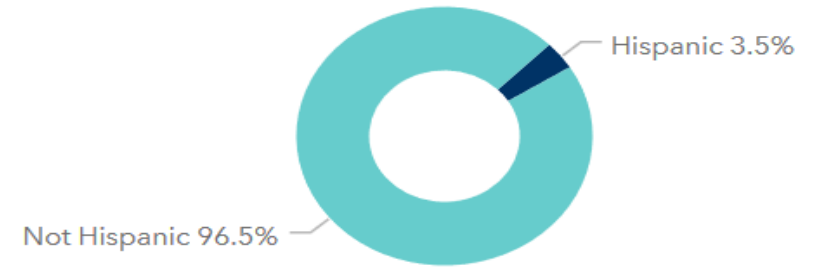
Vermont COVID-19 **Cases** by Age Group



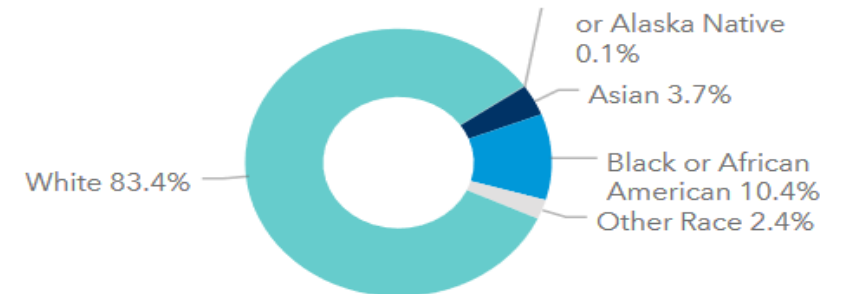
Vermont COVID-19 Cases by Sex



Vermont COVID-19 Cases by Ethnicity if Known



Vermont COVID-19 Cases by Race if Known



# School/Higher Education News (national and Vermont)

- **NYT: *Schoolchildren Seem Unlikely to Fuel Coronavirus Surges, Scientists Say* (10/22/20)**
  - <https://www.nytimes.com/2020/10/22/health/coronavirus-schools-children.html>
  - <https://policylab.chop.edu/reports-and-tools/policy-review-evidence-and-guidance-in-person-schooling-during-covid-19-pandemic>
- Boston public schools move to fully remote (until rates falling X 2 wks.)
- Union Elementary School (Montpelier) remote learning today
  - No connections of new case to other community members & new positive case in the other school buildings; school officials will meet with VDH today.
  - Two pos. cases last week; 4 more announced Monday (all in same classroom); at least some cases connected to hockey-associated outbreak.
- St. Michael's College moving to all remote (6 new cases; 8 total)



# From the CDC

- MMWR this week (10/23/20 – selected contents)  
<https://www.cdc.gov/mmwr/volumes/69/wr/pdfs/mm6942-H.pdf>
- ▣ **Vaccination Coverage by Age 24 Months Among Children Born in 2016 & 2017 — National Immunization Survey-Child, United States, 2017–2019**
- ▣ Mitigating COVID-19 Outbreak Among Major League Baseball Players United States 2020
- ▣ Race, Ethnicity, and Age Trends in Persons Who Died from COVID-19 — United States, May–August 2020
- ▣ Excess Deaths Associated with COVID-19, by Age and Race and Ethnicity — United States, January 26–October 3, 2020
- ▣ Association Between Social Vulnerability and a County’s Risk for Becoming a COVID-19 Hotspot — United States, June 1–July 25, 2020

# From the CDC

- MMWR (early release 10/21/20): COVID-19 in a Correctional Facility Employee Following Multiple Brief Exposures to Persons with COVID-19 - [Vermont](#), July–August 2020
  - ▣ VT DOC officer infected after several brief interactions with incarcerated people w/COVID-19. No individual interactions > 15 mins.; total amt. over time > 15 mins. (based upon video footage review)
  - ▣ Transmission can occur during multiple brief exposures w/infected person
  - ▣ VDH: “contributes to natl. understanding of COVID-19 transmission.”  
<https://www.healthvermont.gov/media/newsroom/Vermont-investigation-contributes-national-understanding-COVID-19-transmission-October-22-2020>
- **Revised CDC definition close contact:** within 6 feet of infected person for cumulative total  $\geq$  15 minutes over 24-hour period.  
<https://www.cdc.gov/coronavirus/2019-ncov/php/contact-tracing/contact-tracing-plan/appendix.html>



# Revised CDC Close Contact Definition: VT Impact

## From VDH:

- Vermont will be moving forward with the change in close contact definition.
- Do not anticipate that this huge impact; has already been implemented in some facilities and in some situations.
- Working on appropriate revisions to website and other guidance documents

# Today's Media Briefing (10/23/20)



## Governor Phil Scott

- COVID vaccine plan submitted to CDC last week
- Thank you to Vermonters and continued vigilance needed

## VDH Commissioner Mark Levine

- COVID *interim* vaccine plan on VDH website
  - Advisory committee to assure equitable access for vaccine
  - October 13<sup>th</sup> national group will describe priority populations
  - Pharmacies will be able to administer vaccine
  - Providers must be enrolled with VDH immunization program to administer COVID vaccine



# Today's Media Briefing (cont'd.)



## VDH Commissioner Mark Levine

- Will be 2-dose vaccines
- Safety and effectiveness are the only priorities

## Commissioner Pieciak

- Expanded hazard pay to wider range of services including food services, childcare and former employees who worked during March
- Only employers can apply for 2<sup>nd</sup> round applications
- October 28: application process opens
- Employers can attend webinar on October 27
- Information on Department of Financial Regulation website

# Today's Media Briefing (cont'd.)

## AOE Secretary Dan French

- More cases in schools and schools continue to operate well
- Student representative at State School Board meetings spoke this week about comfort in routines
- One measure of success is the ability establish routines and connections
- School nurse are pragmatic and resourceful – called out Louisa Driscoll as School Nurse of the Year
- Task Force revision published soon – will be implemented in **mid-November** to allow time to prepare
- Travel screening, distancing changes (add grade 6 for 3 feet distance), **no longer allowing plexiglass to reduce distancing requirements**
- Distancing in cafeterias described; school buses need 4 windows open

# Today's Media Briefing (cont'd.)

## AOE Secretary Dan French

- ❑ Music presented significant challenge due to risk in indoor spaces
- ❑ New guidance allows individuals to sing or play woodwinds alone but not in groups
- ❑ Sports guidance anticipated next week

**BACK to Dr. Levine-** agreeing with 3 things said by Secretary French:

- ❑ We should listen to our students/children – they are wise
- ❑ School nurses are pivotal and amazing
- ❑ Travel screening is important

# Today's Media Briefing (cont'd.)

## Commissioner Levine

Several evolving situations:

- Outbreak in Central VT
  - ▣ 2 colleges (6 cases)
  - ▣ 7 schools (12 cases),
  - ▣ 7 work places (12 cases),
  - ▣ 2 hospitals (2 cases)
  - ▣ 43 cases and hundreds of close contacts
  - ▣ These are real people and please respect privacy
- 28 new cases “expected” but also concerning (50 % of cases related to hockey, wedding and St. Michael’s College)
- Poss. factors: Foliage? Encroachment from boarding states? Increased indoor time?
- Increase in contacts/case via tracing: was 2-3/case in spring vs.  $\geq 6-7$ /case now



# Today's Media Briefing (10/23/20)

## Commissioner Levine

- Shout out to VDH team who published in MMWR about Corrections Officer contracting virus after multiple brief interactions with infected people. These findings led to CDC change in definition of close contact. Now someone who is within 6 feet with CUMULATIVE time of 15 minutes over 24 hours
- Very proud of our team
- Commitment to following the science
- Make hard but important choices – focus on avoiding large gatherings and crowds now that we are indoors

# Practice Issues

## *Friday Potpourri (clinical issues, more about schools)*

*Breena Holmes, MD FAAP- Sr. Faculty VCHIP*

*Physician Advisor VDH MCH & HOC*



# Clinical Scenario of the Week

- Infants seen with classic bronchiolitis (*thank you, Joe Nasca, MD*)
  - ▣ Patients < one year of age
  - ▣ No travel or COVID exposure history
  - ▣ Typical presentation for common respiratory viral infection prevalent this time of year
  - ▣ To test or not to test?
- Helpful guidance
  - ▣ UVM MC “Testing for Influenza-Like Illnesses” – do not test for flu, RSV in healthy outpatients w/o risk for severe disease “unless compelling clinical reasons” (**should** be done for children <5, & esp. < 2 y.o.)
  - ▣ AAP: COVID-19 Testing Guidance <https://services.aap.org/en/pages/2019-novel-coronavirus-covid-19-infections/clinical-guidance/covid-19-testing-guidance/>

# Clinical Issues Arising in Vermont Schools

- Supporting ESL families re: sx screening, exclusion, etc. – how to help?
- PCPs not being called by families when advised by school nurse
- Concerns re: “essential travel” (people working immediately after returning from out of state in this context)
- Accuracy of **no touch thermometers**: e.g., indoor reading of 97 in pt. w/fever 102 by aural (monitor cases to cont. to inform utility of T at school)
- Challenges w/failure to return disposition forms
- Frequency of rhinorrhea/congestion as sx
- Necessity to assess multiple children in isolation rooms at one time – concerns about running out of space
- ***Are you seeing these – and what else?***

# Summary: School Guidance Changes (slide 1/3)

## **Highlights and incorporation of supplemental guidance as prev. published in AOE FAQs:**

- Clarifications and emphasis on quarantine guidance for out-of-state travel
  - Added the requirement of a daily travel screen for staff and students
- Clarity around return-to-school after illness, including links to the return-to-school algorithm and parent guidance
- Clarification on cleaning schedule when an individual is sent to the isolation room, as well as cleaning of the isolation room
- Clarification on factors the Health Department will use in making recommendations when there is a case of COVID in school
- Added winter weather considerations for buses and transportation
- Added recommendations for seating charts in the school bus and cafeteria, along with classrooms
- Added link to guidance on mask exemptions

# Summary: School Guidance Changes (slide 2/3)

## Highlights and incorporation of supplemental guidance as prev. published in AOE FAQs:

- ❑ Clarified guidance on cleaning and disinfecting, including accidental large volume spills or body fluids.
- ❑ Added guidance on the use of plexiglass/plastic barriers
- ❑ Clarified guidance on shared materials and lockers
- ❑ Younger students for the purposes of physical distancing requirements is now defined as students in PreK through Grade 6
- ❑ Clarified guidance on minimum physical distancing requirements for younger and older students
- ❑ Clarified guidance on performance arts
- ❑ Added new guidance on physical education
- ❑ Added new guidance on driver education (as published in the AOE FAQ)
- ❑ Added new guidance on the public use of school facilities (as published in the AOE FAQ)



# Summary: School Guidance Changes (slide 3/3)

## **Highlights and incorporation of supplemental guidance as prev. published in AOE FAQs:**

- ❑ Added new guidance on indoor field trips
- ❑ Clarifications on isolation space
- ❑ Additional guidance on HVAC requirements
- ❑ Additional guidance on the use of cafeterias in Step III
- ❑ Explanation on the use of 6-feet to determine close contacts for the purposes of contact tracing, as well as additional instruction for schools for contact tracing
- ❑ Additional resources for schools from the Health Department and CDC

# Coming Attractions!

## Vermont (VDH, AOE)

- Revised: ***A Strong and Healthy Start: Safety and Health Guidance for Reopening Schools, Fall 2020***
- **Primary Care COVID-19 Checklist for Testing Symptomatic Patients**
- **Adult algorithm**

## Strong and Healthy Start (School Reopening) Task Force Update

- ❑ Revision in final review – anticipate distribution soon
- ❑ Key issues (selected): health screening/temps; travel screening; bus transport in winter; physical distancing – pre-K grade 6, and middle school/ high school; music education; PE/Equipment; field trips.
- ❑ **Updated** parent guidance to align with algorithm (child care/sch age)
  - ❑ [https://www.healthvermont.gov/sites/default/files/documents/pdf/CYF\\_VT%20BacktoSchoolAfterIllness10.6.pdf](https://www.healthvermont.gov/sites/default/files/documents/pdf/CYF_VT%20BacktoSchoolAfterIllness10.6.pdf)
  - ❑ [https://www.healthvermont.gov/sites/default/files/documents/pdf/CYF\\_VT%20BacktoChildCareAfterIllness10.6.pdf](https://www.healthvermont.gov/sites/default/files/documents/pdf/CYF_VT%20BacktoChildCareAfterIllness10.6.pdf)

# *Request Your Assistance:* Youth E-Cigarette Use

- Please look for and complete a survey to inform VCHIP's **Quality Improvement Project to Address E-Cigarette Use in Vermont Youth**
  - <https://redcap.med.uvm.edu/surveys/?s=PHXPWHDFED>
- Goal: assess primary care providers' knowledge and attitudes about youth vaping. Results will inform educational webinar content.
- SEE: email from Stephanie Winters Oct. 13 – open to **ANY** health care professional who provides primary care for adolescents and young adults, including NPs and PAs
- ***Thank you*** from VCHIP's Non-Vaping Team!

*Happening Soon:*

# Vermont Medical Society 207<sup>th</sup> Annual & Collaborative Meeting

□ <https://vtmd.org/annual-meeting>

Register Today!

Vermont Medical Society

NOVEMBER 7, 2020  
VIRTUAL ANNUAL MEETING

207<sup>th</sup> Collaborative

Vermont Chapter  
INCORPORATED IN VERMONT  
American Academy of Pediatrics  
DEDICATED TO THE HEALTH OF ALL CHILDREN

VTAFP

Vermont Psychiatric Association

## AGENDA: 2020 VIRTUAL VMS ANNUAL MEETING & COLLABORATIVE MEETING WITH VTAFP, VPA & AAPVT

### A.M. SESSION

- 8:00: Zoom Opens!
- 8:15: Welcome
- 8:30-10:30: VMS Annual Business Meeting
- 10:45-12:15: Awards Presentations

### P.M. SESSION

- 12:25-12:45: Welcome
- 12:45-1:45: Creating an Organizational Culture Through Equity w/ Marie-Elizabeth Ramas, M.D., FAAFP
- 1:45-2:30: Impacts of Delayed Care on Health Care Outcomes w/ Fan Tait, M.D., FAAP
- 2:45-3:45: Family Detention, COVID, and the Ethical Duties of Doctors in Immigration Detention w/ Scott Allen, M.D., FACP
- 3:45-4:45: What Does the Next Year in Healthcare Look Like in Vermont? w/ Commissioner Mark Levine, M.D., Secretary Michael Schirling, & Commissioner Michael Pieciak
- 4:45- 5:00: Wrap-Up

# Volunteers needed for Pediatric SARS-CoV-2 serostudy

- What (volunteers are needed to perform the following tasks)
  - ▣ Blood draw by finger prick
  - ▣ Crowd control
  - ▣ General logistical support (organizing specimen tubes, labels, etc.)
- Where
  - ▣ Colchester High School parking lot
- When (subject to change)
  - ▣ Wednesdays and Saturdays in early Nov
  - ▣ Start Wed, 11/4
  - ▣ End Sat, 11/14
- Why
  - ▣ To generate data on local pediatric seroprevalence
  - ▣ Bonus—Lunch is on me!
- How
  - ▣ Contact Benjamin Lee: [blee7@uvm.edu](mailto:blee7@uvm.edu)
  - ▣ No need to contact if you have already reached out during initial request this past summer



# Special Message for Vermont Voters

- Vermont Secretary of State's video/ad starring the former "World's Most Interesting Man" (Jonathan Goldsmith) & his dog!
  - ▣ <https://www.facebook.com/SecretaryOfStateJimCondos/videos/261479291906510>
- ***"Vote early, my friends!"***



 VERMONT Secretary of State

[sos.vermont.gov](https://sos.vermont.gov)



# Questions/Discussion

- Q & A Goal: monitor/respond in real time; record/disseminate/revisit later as needed.
- **For additional questions, please e-mail: [vchip.champ@med.uvm.edu](mailto:vchip.champ@med.uvm.edu)**
  - ▣ **What do you need** – how can we be helpful (specific guidance)?
- **VCHIP CHAMP VDH COVID-19 website:**  
[https://www.med.uvm.edu/vchip/projects/vchip\\_champ\\_vdh\\_covid-19\\_updates](https://www.med.uvm.edu/vchip/projects/vchip_champ_vdh_covid-19_updates)
- Next CHAMP call: **Monday, October 26 12:15-12:45** (current schedule: M-W-F)
- Please tune in to VMS call: **next week**  
**Thursday, October 29, 12:30-1:00 p.m. – Zoom platform & call information:**
- **Join Zoom Meeting:**  
<https://us02web.zoom.us/j/86726253105?pwd=VkVuNTJlZFQ2R3diSVdqdJl2ZG4yQT09>
  - ▣ Meeting ID: 867 2625 3105 / Password: 540684
  - ▣ One tap mobile - +1 646 876 9923, 86726253105#, 0#, 540684# Dial In- +1 646 876 9923 / Meeting ID: 867 2625 3105 / Password: 540684