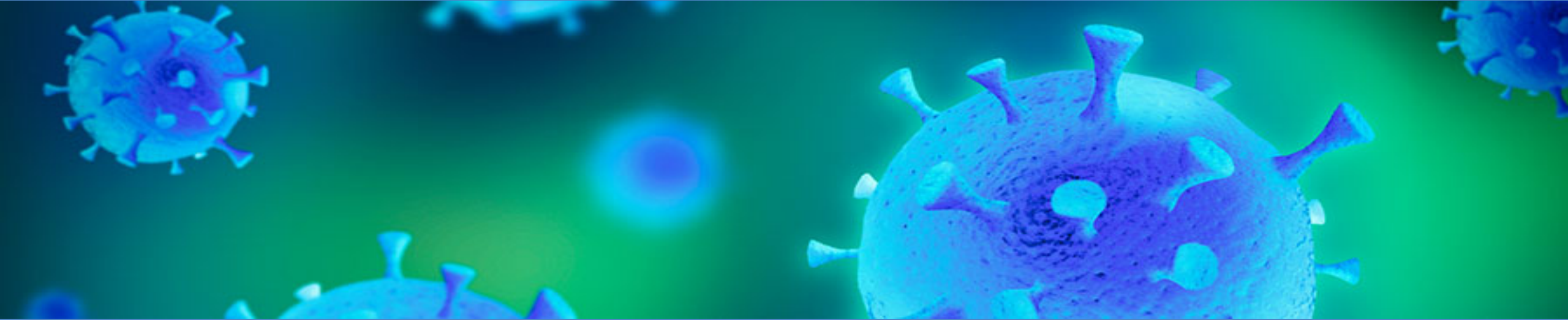


VCHIP / CHAMP / VDH COVID-19 UPDATES



Wendy Davis, MD FAAP - Senior Faculty, Vermont Child Health Improvement Program, UVM
Breena Holmes, MD FAAP – VCHIP Senior Faculty & Physician Advisor, MCH Division, VDH
November 11, 2020




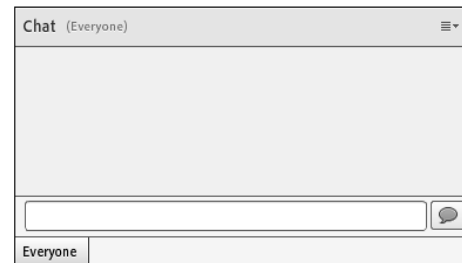
Technology Notes

1) All participants will be muted upon joining the call.

If you dialed in or out, unmute by pressing #6 to ask a question (and press *6 to mute).

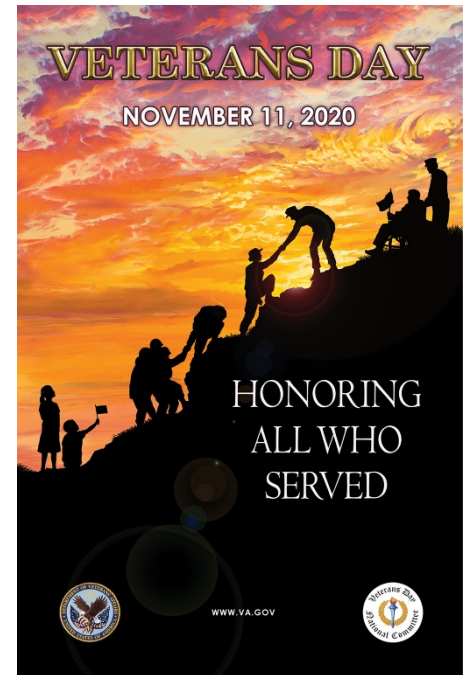
Presenters: Please avoid the use of speakerphone and make sure your computer speaker is muted if you dialed in via phone.

2) To ask or respond to a question using the *Chat* box, type your question and click the  icon or press Enter to send.



Overview

- **Honoring Veterans Day, Remembrance Day**
- *Reminder: weekly event schedule*
 - ▣ **VCHIP/CHAMP/VDH calls: Mon/Wed/Fridays; Gov. Media Briefings Tues/Fri; VMS call with Comm. Levine Thursday**
- Situation, VDH, AAP, UVM CH/MC/HN updates
- Practice Issues: ***COVID-19 in VT Schools; Tuesday Media Briefing (Epi, Travel, Testing Updates)***
- Q & A, Discussion



[Please note: the COVID-19 situation continues to evolve very rapidly – so the information we’re providing today may change quickly]

Today's Moment of Joy

- UVM Department of Pediatrics Residency Recruitment video (*thank you, **PGY3 Dr. Sarah Couser!***)
 - ▣ <https://www.youtube.com/watch?v=fRMXnox3PI4&list=PLAopI4e1glrqTLsHJED1DEUxGQIFIQo94&index=3&app=desktop>



Situation update

New Cases 72 2,535 Total
Currently Hospitalized 14
Hospitalized In ICU 6
Hospitalized Under Investigation 4
Percent Positive 7-day Avg. 0.8%
People Tested 196,281
Total Tests 449,806
Recovered 1,947 76.8% of Cases
Deaths 59 2.3% of Cases
Travelers Monitored 207
Contacts Monitored 227
People Completed Monitoring 10,558
Last Updated: 11/11/2020, 10:54:04 AM

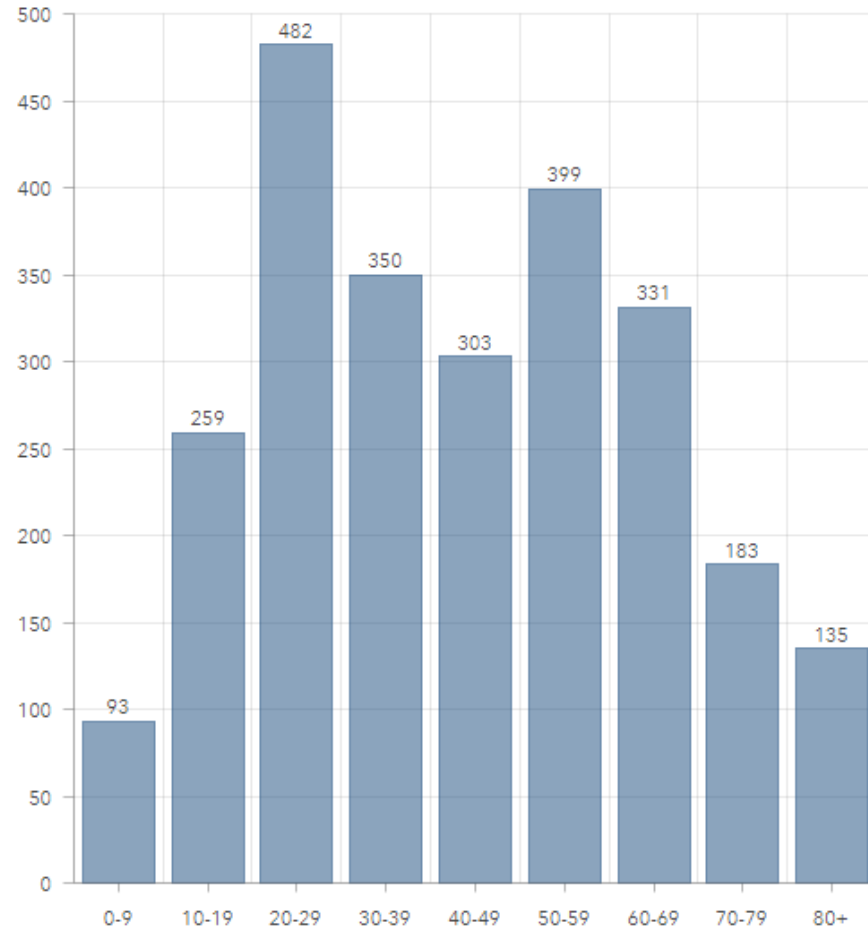
Addison County New Cases: 3 Recent Cases 14 days: 13
Bennington County New Cases: 2 Recent Cases 14 days: 10
Caledonia County New Cases: 1 Recent Cases 14 days: 16
Chittenden County New Cases: 11 Recent Cases 14 days: 139
Essex County New Cases: 0 Recent Cases 14 days: 13
Franklin County New Cases: 4 Recent Cases 14 days: 10
Grand Isle County New Cases: 4 Recent Cases 14 days: 12
Lamoille County New Cases: 6 Recent Cases 14 days: 11
Orange County New Cases: 6 Recent Cases 14 days: 28
Orleans County New Cases: 1 Recent Cases 14 days: 24
Pending Validation New Cases: 0 Recent Cases 14 days: 1
Rutland County New Cases: 11 Recent Cases 14 days: 15
Washington County New Cases: 19 Recent Cases 14 days: 66
Windham County New Cases: 1 Recent Cases 14 days: 16

- Election Day +8 (we think we're done...)
- U.S. 10.3 million+ cases; 240,241 deaths
 - ▣ <https://www.nytimes.com/interactive/2020/us/coronavirus-us-cases.html> (updated 11/11/20)
 - ▣ 11/10/20: **139,855 new cases & 1,448 deaths**
 - ▣ Past week: average 123,315 cases/day (increase of 69% from average 2 weeks ago)
 - ▣ **1.2 million+ deaths worldwide**
- **VDH Weekly Data Summary (11/9/20):**
 - ▣ <https://www.healthvermont.gov/covid-19/current-activity/weekly-data-summary>
 - ▣ **Weekly Spotlight** – Cases Among People with Neurological Conditions and Intellectual Disabilities

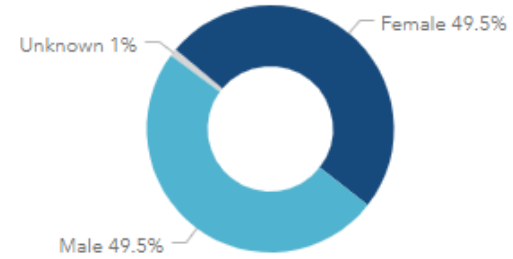
<https://www.healthvermont.gov/covid-19/current-activity/vermont-dashboard>

Situation update

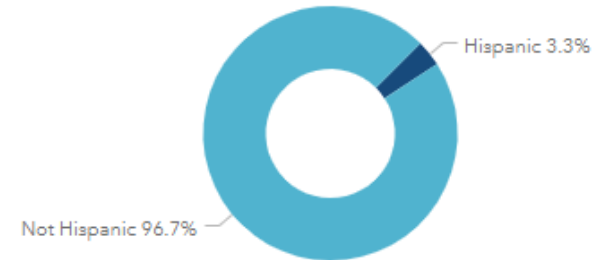
Vermont COVID-19 Cases by Age Group



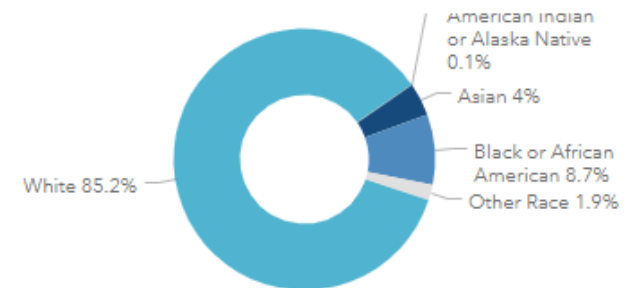
Vermont COVID-19 Cases by Sex



Vermont COVID-19 Cases by Ethnicity if Known



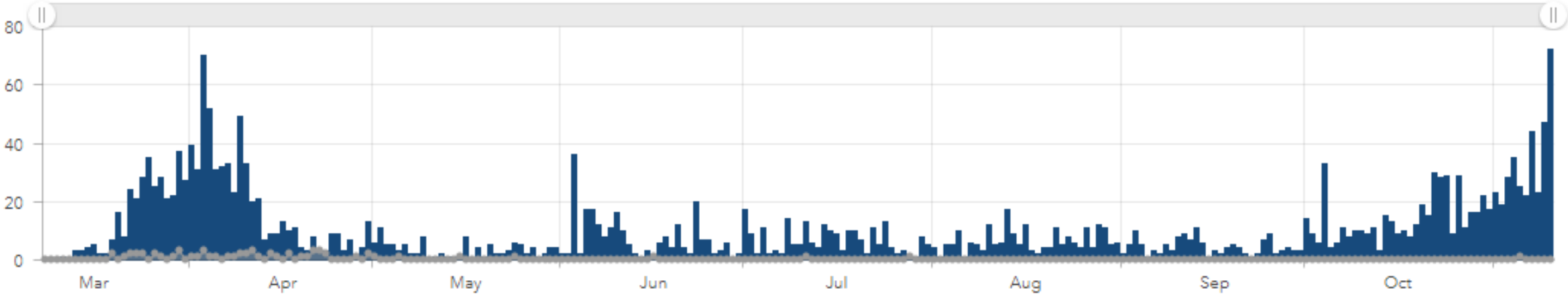
Vermont COVID-19 Cases by Race if Known



Case Demographics

Situation update

Vermont COVID-19 New Cases and Deaths



Hover over chart to see values, and drag scrollbar at top of chart to zoom into date range

COVID-19 Cases in VT K-12 Learning Communities (While Infectious)

- COVID-19 Cases in Vermont K-12 Learning Communities While Infectious (dashboard)
 - ▣ <https://www.healthvermont.gov/sites/default/files/documents/pdf/COVID19-Transmission-Schools.pdf>
 - ▣ Table updated **Tuesday** w/data through previous Sunday: as posted 11/10/20: 54 total cases; 15 cases reported in preceding 7 days (up from 39 total & 11 past 7d.)

Cases in Vermont K-12 Learning Communities While Infectious

Learning Community	Cases Reported In the Past 7 Days	Total Cases
Schools with less than 25 students are reported in the "Total for all Suppressed Schools" row at the end of the table.		
TOTAL FOR ALL SCHOOLS	15	54

- VT College & University dashboards:
 - ▣ <https://dfr.vermont.gov/about-us/covid-19/school-reopening>
 - ▣ St. Michael's College outbreak (part of ice sports): **76 cases** as of media briefing 11/10/20

AAP Updates



AAP National

- ❑ ***THIS JUST IN*** – [Transition Plan: Advancing Child Health in the Biden-Harris Administration](#)
 - ❑ Outlines specific policy recommendations to support our children
 - ❑ Offers comprehensive steps to address wide range of pressing child health issues: COVID-19 pandemic, vaccinations, immigration, health equity and racism, environmental health and more! (**26 child health issues; >140 recommendations**). Builds on AAP [Blueprint for Children](#) (October)
- ❑ Gearing up to address vaccine hesitancy

AAP Vermont

- ❑ Leah Costello – interview on WCAX

UVM Children's Hospital, UVM MC/Health Network Update

From **Lewis First, MD**, Professor and Chair, Dept. of Pediatrics LCOM; Chief of Pediatrics, UVM Children's Hospital

- ❑ Multiple systems continue to be unavailable affecting many areas across the Health Network (very sophisticated malware)
- ❑ **Ambulatory**: schedules back on line; – please continue to provide/advise pts. to bring med list, any relevant summaries.
- ❑ Email remains one-way only (out, not in): alternate systems in place.
- ❑ Potential timelines: best case Epic read-only next week? May be longer!
- ❑ **Lab**: priority = labs needed for dx & med. mgt.; please cont. to hold routine
 - ❑ **Paper requisitions only** w/provider name, location, phone/fax. **OPD results faxed.**
 - ❑ Ltd. UVM Phlebotomy: Main Campus ACC only
 - ❑ COVID tests: **pos. results to ordering prov. by phone**; neg faxed; if urgent, call Lab

Customer Service: **802-847-5121**.

UVM Children's Hospital, UVM MC/Health Network Update

From **Lewis First, MD** (cont'd.)

- ❑ **Pediatric Hematology-Oncology:** caring safely for existing patients but triaging newly-diagnosed oncology patients to other centers (cannot provide staging, enroll in clinical trials here).
- ❑ **To contact specialists:** call Provider Access Service (802-847-2700); will need to leave call-back number (they cannot keep you on hold).
- ❑ General phone number if patients having trouble getting through to doctor's office: **802-847-8888**.
- ❑ Under discussion: possible change in visitation policies in context of increasing case numbers.
 - ❑ **Hospital clinical staff to wear eye protection at all times as part of PPE.**

Practice Issues

COVID-19 in Vermont Schools; Epi, Travel, Testing Updates



Tuesday Media Briefing (11/10/20)



Governor Phil Scott

- VT case numbers rising – we can change trajectory, but we'll need to dig deep.
- Over last few weeks, the number of counties open for travel w/o quarantine has been shrinking – **social gatherings & travel** are common denominators in our rising case counts.
- Today: temporarily suspending use of travel map for any **non-essential** travel

Tuesday Media Briefing (cont'd.)



- Makes sense to simplify policy in order to insure better compliance – if you don't need to travel, don't. And if you do travel, follow the rules! Think carefully re: wants vs. needs.
- VT Dept. of Public Safety Mike Schirling: VT State Police will conduct “compliance assessments” (e.g., lodging, restaurants, bars).
 - ▣ DPS & ACCD community outreach
- Deer season: Dept. of Fish & Wildlife outreach to assure VT & out-of-state hunters understand travel/social gathering guidance
- Also – strengthening testing program.

Tuesday Media Briefing (cont'd.)



Modeling – Commissioner Pieciak:

- U.S. passed 10m. new cases – fastest we've gotten to additional million cases (just 10d. vs. 13d. to previous millions cases)
- U.S. case curve (7d. av.): spring 31K, summer 66K, now 112K cases/day
- National forecast: anticipate **79%** increase new cases next 6 weeks – by 12/18, just under 200K case/d.
- Hospitalizations also on the rise – this wave just as strong if not stronger.
- National deaths: spring 2100/d., summer 1100, now just <1K but deaths lag behind cases.

Tuesday Media Briefing (cont'd.)



Modeling – Commissioner Pieciak:

- Regional cases increased by 33%; VT just under 200 cases this week NH & ME both had >1K cases.
- Region over time: cases going up X 11 straight wks. – last few weeks going up more rapidly (tho lower than spring).
- 7d. averages in NH, ME, NY, MA all increasing.
- ME cases doubled in last wk. MA closing in on highest point in pandemic; NY large uptick.
- Regional forecast no better than natl. Expect 105% increase in new cases over next 6 wks.

Tuesday Media Briefing (cont'd.)

- Travel map: v. few places eligible for no quarantine.
 - ▣ Either 14d. quarantine or test at 7d.
- Natl. map full of red – v. few places meet the travel std. <30 cos across U.S. would meet VT standard.
- NE 800-1200 active cases/m.
- VT DATA: VT curve – now in one of 3 periods w/accelerated case growth. This period started from higher base w/multiple outbreaks.
- Age: from beginning of pandemic-now (14d. rolling median of age of confirmed cases): was higher in spring; lower in summer; now ~50 y.o. for 1st time since May.



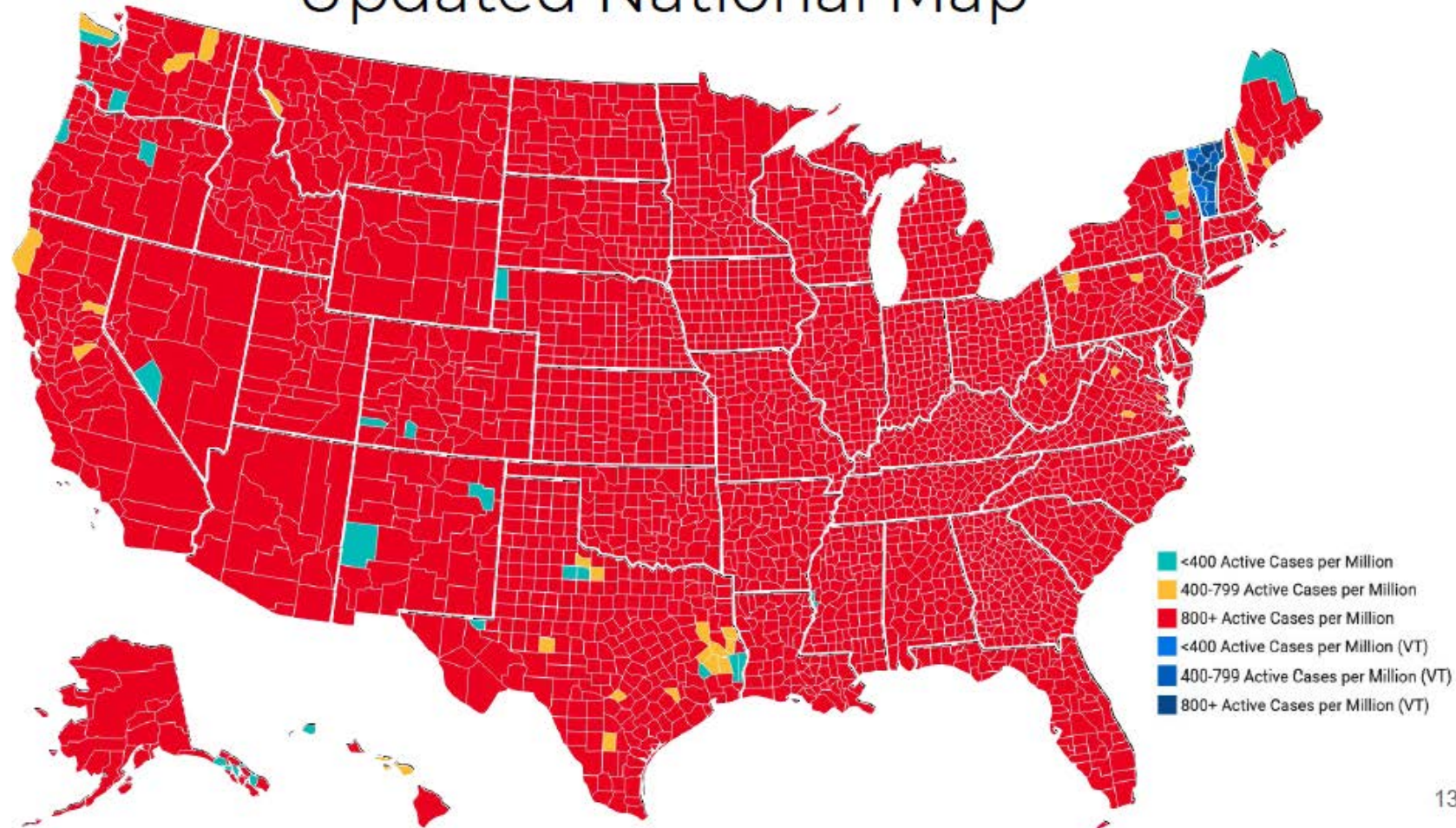
Tuesday Media Briefing (cont'd.)



- Hospitalization trend slight uptick (both hosp/ICU beds), though not as high as spring.
- VT Forecast: case growth has remained ~where projected.
- But could see 40-60/d. over next 6 wks.
- Comparison with Canadian Thanksgiving: provinces (western) that celebrate more like U.S. saw dramatic increases in case growth following Oct. 12 holiday. These 4 (Saskatchewan, Alberta, BC, Manitoba) + Ontario grew **>200%**
- Vs. Atlantic provinces – did not see uptick; cases went down.

Surrounded by a Sea of Red (November 10, 2020)

Updated National Map



13

Tuesday Media Briefing (cont'd.)



- Halloween events involving adults.
- Suspension of cross-state travel map
- NOW is the time to consider severely limiting travel & being extremely cautious/careful in gatherings, even w/family.
- Anyone who travels needs to follow Vermont quarantine rules.
TRAVEL NOW = QUARANTINE. Stay home/away from others X 14d. w/option to end after 7d. w/neg. PCR test **as long as no symptoms.**
- Last night (11/9): 46 new cases; 20 outbreaks & 63 situations: in schools, colleges, health care settings, work sites, social gatherings (e.g., ice sports = 125 cases w/76 at SMC).

Tuesday Media Briefing (cont'd.)



VDH Commissioner Levine

- We've worked so hard – now is the time to truly commit to doing our part.
- If you do have exposure, consider getting tested: healthvermont.gov/covid19testing
- Call your health care professional if **any symptoms!**
- Testing: has been robust in VT. Per NYT: VT is #1 at >2K % of our testing target – but not available to everyone immediately. **Announcing** partnership with CIC Health of Cambridge, MA to offer daily testing statewide (PCR self-administered nasal swab).

Tuesday Media Briefing (cont'd.)



VDH Commissioner Levine

- This additional testing is “part of our fight.”
- Also markedly increasing surveillance testing to understand where virus is in communities (esp. asymptomatic).
- School teachers & staff: working w/ AOE to stand up **voluntary** testing K-12 teachers & staff starting next week.
 - ▣ **NOTE: teachers not at increased risk** – but large group for surveillance
- Week after TG, offer to ¼ schools each wk. Contractor will provide training, TA, supplies, lab analysis. Districts provide teams; SOV manage contract, funding. Results will go directly to indiv. VDH Epi staff/RNs will contact pos. to provide PH guidance.

CHAMP Learning Session (10/13/20) Materials Now Posted!

- ***Thank you, Avery Rasmussen and Angela Zinno!***
- Learning session website with recordings and slide decks: http://www.med.uvm.edu/vchip/champ/champ_2020_learning_session
- Link directly to Dr. Berwick's keynote recording: <https://uvm-vchip.adobeconnect.com/champ2020learningsessionmoraldeterminantsofhealth/event/registration.html>
- Link directly to Dr. Berwick's keynote slide deck (NOTE – this will be removed from the website 30 days from the date posted): http://contentmanager.med.uvm.edu/docs/keynote_berwick/vchip-documents/keynote_berwick.pdf?sfvrsn=5b9b1922_2

Questions/Discussion

- Q & A Goal: monitor/respond in real time; record/disseminate/revisit later as needed.
- **For additional questions, please e-mail: vchip.champ@med.uvm.edu**
 - ▣ **What do you need** – how can we be helpful (specific guidance)?
- **VCHIP CHAMP VDH COVID-19 website:**
https://www.med.uvm.edu/vchip/projects/vchip_champ_vdh_covid-19_updates
- Next CHAMP call: **Friday, November 13, 12:15-12:45 (current schedule: M-W-F)**
- Please tune in to VMS call with VDH Commissioner Levine:
Thursday, November 12, 12:30-1:00 p.m. – Zoom platform & call information:
- **Join Zoom Meeting:**
<https://us02web.zoom.us/j/86726253105?pwd=VkVuNTJlZFQ2R3diSVdqdJlJ2ZG4yQT09>
 - ▣ Meeting ID: 867 2625 3105 / Password: 540684
 - ▣ One tap mobile - +1 646 876 9923, 86726253105#, 0#, 540684# Dial In- +1 646 876 9923 / Meeting ID: 867 2625 3105 / Password: 540684