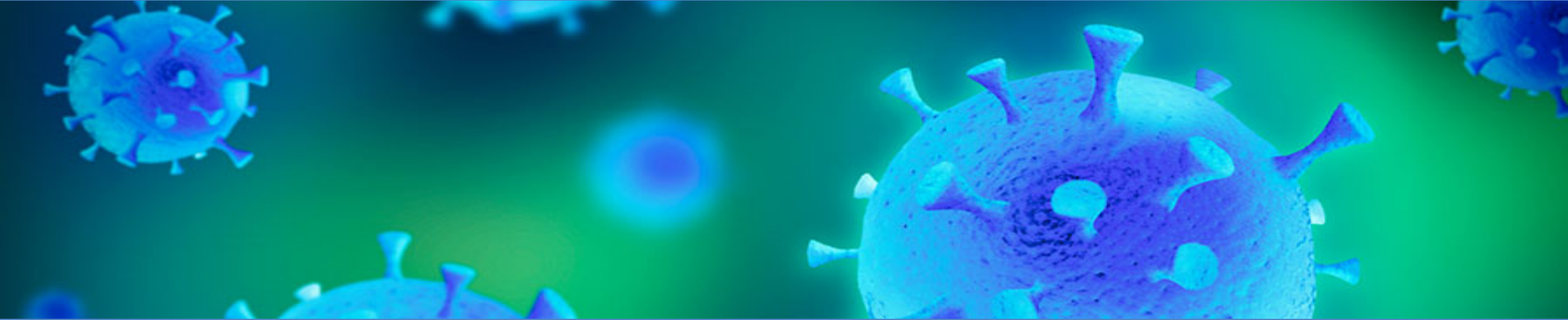


# VCHIP / CHAMP / VDH COVID-19 UPDATES



*Wendy Davis, MD FAAP - Senior Faculty, Vermont Child Health Improvement Program, UVM*  
*Breena Holmes, MD FAAP – VCHIP Senior Faculty & Physician Advisor, MCH Division, VDH*  
*January 29, 2021*



# Technology Notes

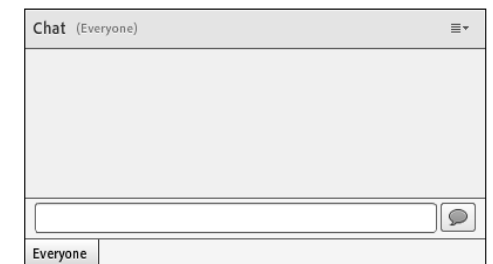
- 1) All participants will be muted upon joining the call.
- 2) If you dialed in or out, **unmute by pressing #6** to ask a question (and press \*6 to mute).  
**If you are having audio difficulties and are using your computer speakers, you may wish to dial in:**

**Call in number – 1-866-814-9555**

**Participant Code – 6266787790**

**Presenters:** Please avoid the use of speakerphone and make sure your computer speaker is muted if you dialed in via phone.

- 3) To ask or respond to a question using the **Chat** box, type your question and click the  icon or press Enter to send.



# Overview

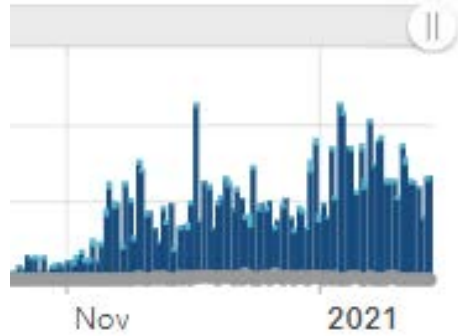


- **National Preschool Health & Fitness Day**
  - ▣ SEE *Kiddie CATs on the Move* UVM: 32-minute physical activity curriculum for preschoolers (3-5 yo); helps them reach mod-vigorous activity levels & practice GM skills.
  - ▣ <https://www.uvm.edu/catsmove/kiddie-cats-move-program-structure-page>
- *Reminder* – weekly event schedule:
  - ▣ **VCHIP/CHAMP/VDH calls: M/W/F**; Gov. Media Briefings Tues/Fri; VMS call with VDH Commissioner Levine Thurs.
  - ▣ Situation, VDH, CDC, vaccine updates
- Practice Issues: **MIS-C Update (Dr. Kristin Crosby, PICU/UVM CH)**
- Q & A/Discussion

*[Please note: the COVID-19 situation continues to evolve very rapidly – so the information we're providing today may change quickly]*

# Situation update

New Cases
<b>133</b>
11,658 Total
Currently Hospitalized
<b>59</b>
Hospitalized In ICU
<b>10</b>
Hospitalized Under Investigation
<b>3</b>
Percent Positive 7-day Avg.
<b>2%</b>
People Tested
<b>300,912</b>
Total Tests
<b>870,947</b>
Recovered
<b>7,926</b>
68% of Cases
Deaths
<b>172</b>
1.5% of Cases
Travelers Monitored
<b>168</b>
Contacts Monitored
<b>286</b>
People Completed Monitoring
<b>12,593</b>
Last Updated: 1/28/2021, 10:43:40 AM

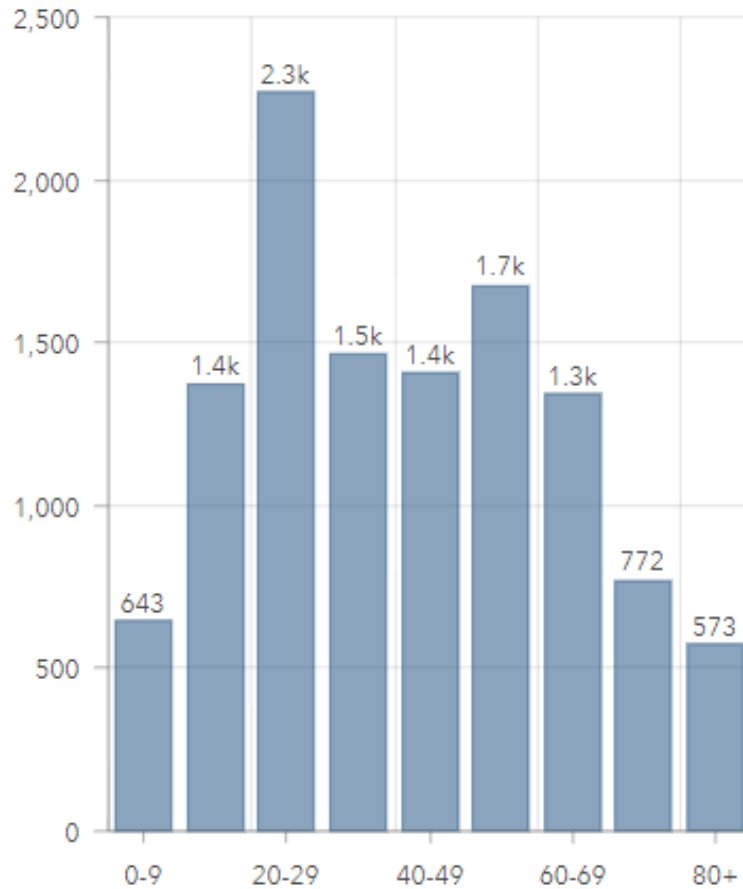


VT New Cases, Probables, Deaths

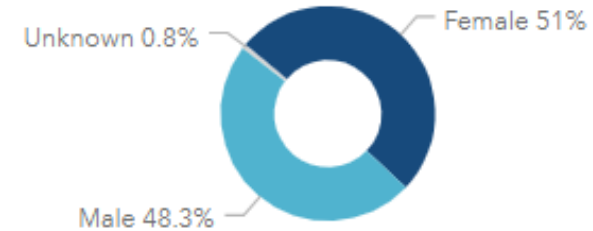
- U.S. **25.8 million+** cases; **433,180 deaths**
  - ▣ <https://www.nytimes.com/interactive/2020/us/coronavirus-us-cases.html> (updated 1/29/21)
  - ▣ 1/28/21: **>165,264 new cases; 3,868 d.; 104,303 hosp.**
  - ▣ Past week: average 159,625 cases/day (decrease of 34% from average 2 weeks earlier)
  - ▣ **2.1 million+ deaths worldwide 101.5 million+ cases)**
- VDH **Weekly Data Summary**(1/29/21)
- <https://www.healthvermont.gov/covid-19/current-activity/weekly-data-summary>
  - ▣ **Weekly Spotlight Topic: COVID-19 in Childcare Settings**  
Find previous summaries at:
    - ▣ <https://www.healthvermont.gov/covid-19/current-activity/weekly-data-summary>

# Situation update

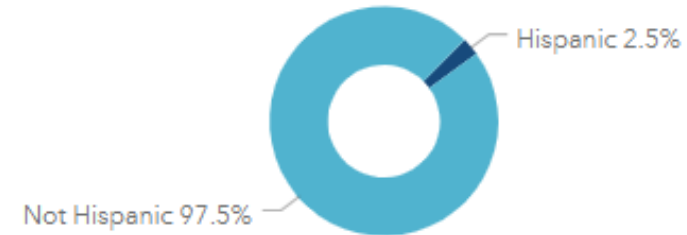
Vermont COVID-19 Cases by Age Group



Vermont COVID-19 Cases by Sex



Vermont COVID-19 Cases by Ethnicity if Known



Vermont COVID-19 Cases by Race if Known



Case Demographics

# COVID-19 Cases in VT K-12 Learning Communities (While Infectious)

## □ COVID-19 Cases in Vermont K-12 Learning Communities While Infectious

- ▣ <https://www.healthvermont.gov/sites/default/files/documents/pdf/COVID19-Transmission-Schools.pdf>
- ▣ Table updated **Tuesday & Friday** w/data through previous Sunday & Wednesday.

January 27, 2021

### Cases in Vermont K-12 Learning Communities While Infectious

Learning Community	Cases Reported In the Past 7 Days	Total Cases
Schools with less than 25 students are reported in the "Total for all Suppressed Schools" row at the end of the table.		
<b>TOTAL FOR ALL SCHOOLS</b>	<b>50</b>	<b>425</b>

January 24, 2021

### Cases in Vermont K-12 Learning Communities While Infectious

Learning Community	Cases Reported In the Past 7 Days	Total Cases
Schools with less than 25 students are reported in the "Total for all Suppressed Schools" row at the end of the table.		
<b>TOTAL FOR ALL SCHOOLS</b>	<b>48</b>	<b>406</b>

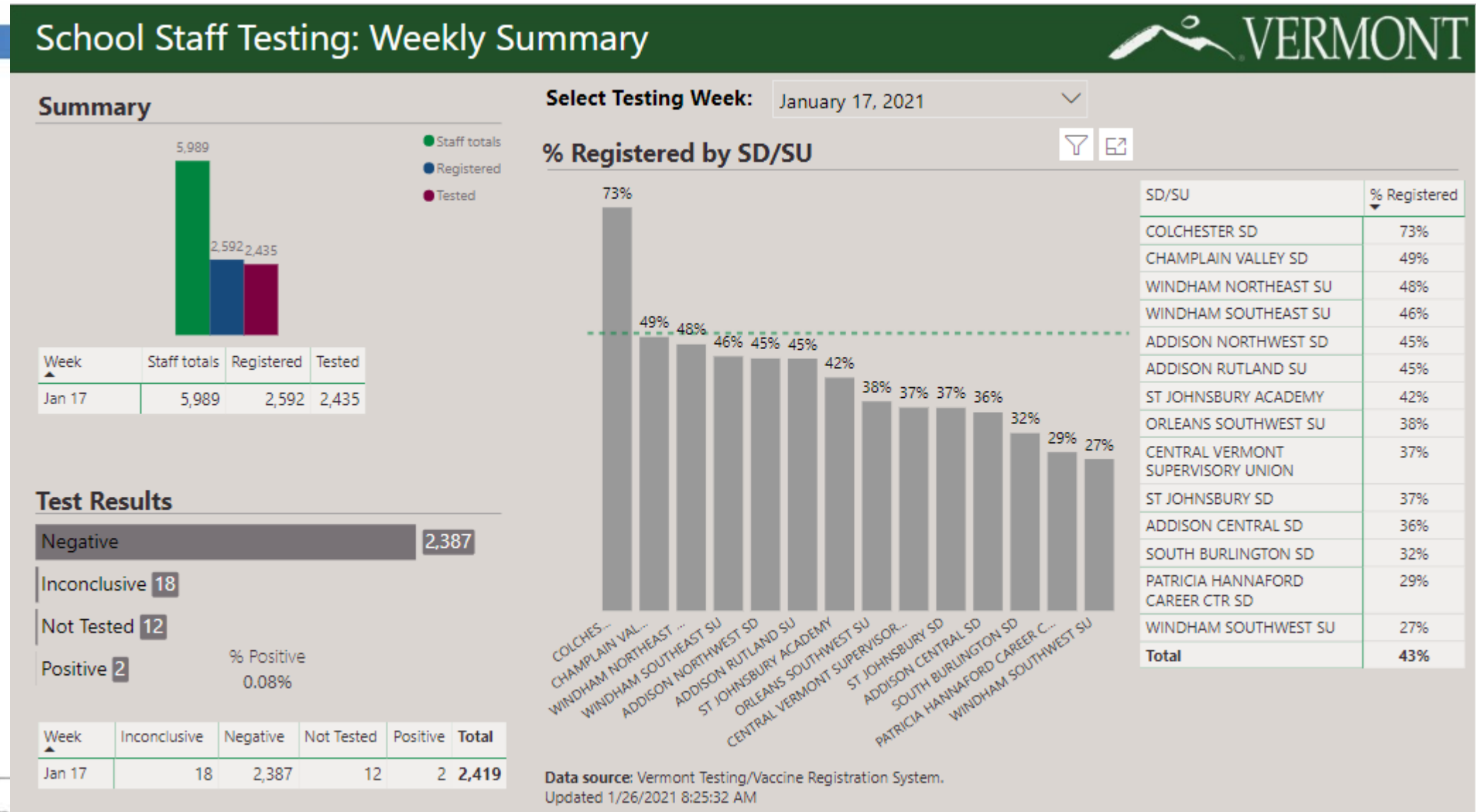
## □ VT College & University dashboards:

- ▣ Returning to campus this week: <https://dfr.vermont.gov/about-us/covid-19/school-reopening>
- ▣ **UVM** – NOTE: winter sports on *pause*

	Received 01/18/21–01/24/21		Cumulative Totals Since 11/25/20	
Population	Test Results Received	Number Tested Positive*	Test Results Received	Number Tested Positive*
Off-Campus Students	2938	25	16925	107
On-Campus Residential Students	112	6	1059	11

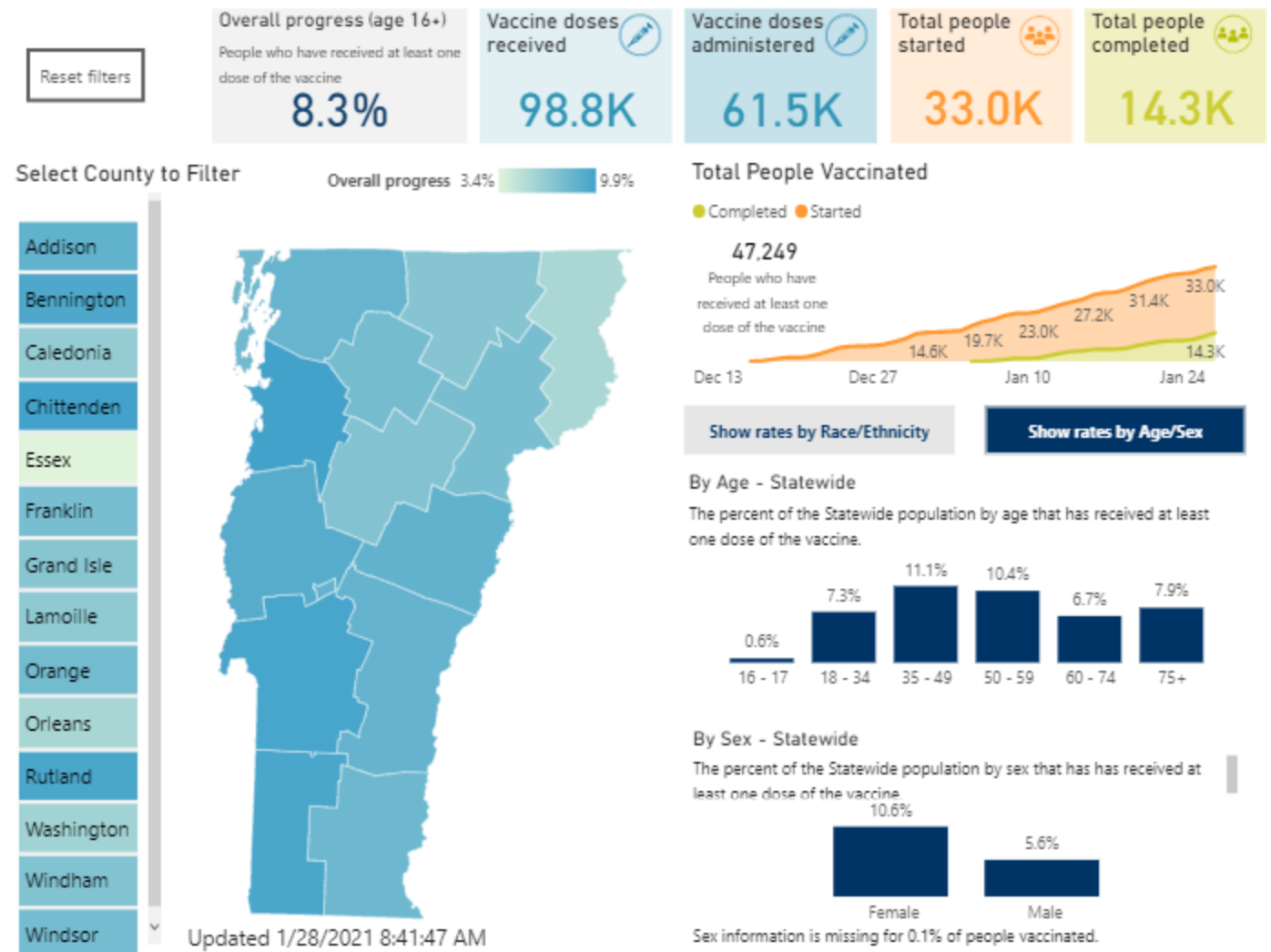


# AOE School Staff Testing Dashboard (updated 1/26/21)



# VDH COVID-19 Vaccine Dashboard

- Daily updates Tues. thru Sat.
- Data = counts reported by end previous day; subject to change.
- Expect enhancements as more info available.
- <https://www.healthvermont.gov/covid-19/vaccine/covid-19-vaccine-dashboard>





# Vaccine News

- ❑ Moderna deems Springfield Hosp. vaccine safe to administer
- ❑ Johnson & Johnson (single-dose) vaccine: expected to apply for FDA EUA as early as next week
  - ▣ Efficacy decreased from 72% in U.S. to 57% in S. Africa (variant now in 31 countries, including U.S./SC)
- ❑ Novavax vaccine nearly 90% effective (prelim. results from clinical trial in U.K.); appeared less effective against S. African variant.
  - ▣ <https://www.statnews.com/2021/01/28/novavax-says-its-covid-19-vaccine-is-90-effective-but-far-less-so-against-one-variant/>
- ❑ OR health workers administer vaccine to motorists stranded in snowstorm – <https://www.nytimes.com/2021/01/28/us/oregon-vaccine-stuck-in-the-snow-drivers.html>

# VDH COVID-19 Vaccine Registration & Sites

<https://www.healthvermont.gov/covid-19/vaccine/getting-covid-19-vaccine>

## COVID-19 VACCINE UPDATE



Vermonters age 75 and up are eligible to receive a vaccine.

[MAKE AN APPOINTMENT AT KINNEY DRUGS](#)

[MAKE AN APPOINTMENT WITH THE HEALTH DEPARTMENT](#)

We understand that some people have experienced technical difficulties and how frustrating that can be. We actively worked through some of those issues and we encourage people who were not able to sign up to try again. Thank you for your patience as we roll out this new system.

There are enough appointments for everyone who is eligible. Appointments are required, and clinics won't be able to accept walk-ins.

- If you already have an account because you were tested for COVID-19 through a Health Department site, you should use the same account information.
- If you have questions or need help creating an online account, please call 802-863-7240 option 9.
- [Get answers to common registration and appointment questions.](#)
- [Watch a video on how to use our appointment registration system.](#)

Can't make an appointment online? You can make an appointment by phone: 855-722-7878

- If you need to speak with someone in a language other than English, call this number, and then press 1.

### Call Center Hours:

Monday-Friday, 8:15 a.m. – 5:30 p.m.

Saturday and Sunday, 10:00 a.m. – 3:00 p.m.



Welcome to the COVID-19 Event Portal. Through this portal you can register for a COVID-19 vaccination clinic or COVID-19 testing event sponsored by the Vermont Department of Health. You will also be able to log in and view your test results once they are available.

#### To register:

1. Create an account.
2. Check your email to verify your account and get your Patient ID (check your spam folder if you don't see the email).
3. Log in with your Patient ID.
4. Register for a testing or vaccination event.

#### Create an Account

\* First Name

Enter First Name

\* Last Name

Enter Last Name


\* Phone Number

Enter Phone Number

\* Email Address

Enter Email



 Photo  Login  Create New Account  Store Locator  Refills

[Home](#)

[Pharmacy +](#)

[Savings +](#)

[Shop +](#)

[About Us +](#)

[Contact Us +](#)

[Careers](#)

## COVID-19 Vaccination Scheduling at Kinney Drugs in Vermont

Currently, the State of Vermont allows Kinney Drugs Pharmacists to administer COVID-19 vaccines to Vermont residents age 75+ BY ONLINE APPOINTMENT ONLY. You do NOT need to preregister on the Vermont Department of Health website to schedule an appointment at Kinney Drugs.

# VDH COVID-19 Vaccine Registration & Sites (cont'd.)

- Appointments from 1/29 – 3/19/21
  - ▣ **Hundreds of sites; 40,000+** appointments
  - ▣ VDH Local (District) Health Office sites; health care sites
- **Online (preferred)** and **phone** appointment scheduling:
  - ▣ 1-855-722-7878
  - ▣ *If you need to speak with someone in a language other than English, call this number, and then press 1.*
- **Call Center Hours:**
  - ▣ Monday-Friday, 8:15 a.m. – 5:30 p.m.
  - ▣ Saturday and Sunday, 10:00 a.m. – 3:00 p.m.

# VDH Vaccine Registration & Sites (a mere sample!)

HC-SouthwesternVT-Clinic (Former College Gymnasium) - Dose 1
OLH-BURLINGTON-POD(Int Arts Academy) - Dose 1
OLH-MORRISVILLE-POD(Hazen Union) - Dose 1
OLH-NEWPORT-POD(State Office) - Dose 1
OLH-RUTLAND-POD(Asa Bloomer) - Dose 1
OLH-SPRINGFIELD-POD(Springfield HS) - Dose 1
HC-SouthwesternVT-Clinic (Former College Gymnasium) - Dose 1
OLH-BARRE-POD(Barre Auditorium) - Dose 1
OLH-BRATTLEBORO-POD(VFW) - Dose 1
OLH-MIDDLEBURY-POD(Legion Post 27) - Dose 1
OLH-ST-ALBANS-POD(Collins Perley) - Dose 1
OLH-ST-JOHSNBURY-POD(Green Mtn Mall) - Dose 1
OLH-WHITE-RIVER-POD(Judd Gym) - Dose 1
OLH-BENNINGTON-POD(College) - Dose 1
OLH-MORRISVILLE-POD(Cambridge Comm Cntr) - Dose 1
OLH-RUTLAND-POD(Asa Bloomer) - Dose 1
OLH-SPRINGFIELD-POD(Windsor Municipal) - Dose 1
OLH-ST-JOHSNBURY-POD(Green Mtn Mall) - Dose 1
OLH-BRATTLEBORO-POD(VFW) - Dose 1
OLH-MIDDLEBURY-POD(Legion Post 27) - Dose 1

OLH-NEWPORT-POD(State Office) - Dose 1
OLH-WHITE-RIVER-POD(Valley Bible) - Dose 1
OLH-BARRE-POD(Barre Auditorium) - Dose 1
OLH-BURLINGTON-POD(Winooski Armory) - Dose 1
OLH-ST-ALBANS-POD(Collins Perley) - Dose 1
HC-BrattleboroMemorial-Clinic (Conf Center) - Dose 1
HC-CentralVT-Clinic (CVMC Conf Rm 1 and 2) - Dose 1
HC-NCHC-Clinic (Concord Town Hall) - Dose 1
HC-RutlandRegional-Clinic (Leahy Community Ctr) - Dose 1
HC-SouthwesternVT-Clinic (Former College Gymnasium) - Dose 1
HC-SpringfieldHosp-Clinic (Adult Day) - Dose 1
HC-UVMCC-Clinic (Essex Fairgrounds) - Dose 1
OLH-BURLINGTON-POD(Int Arts Academy) - Dose 1
OLH-MORRISVILLE-POD(Hazen Union) - Dose 1
OLH-RUTLAND-POD(Asa Bloomer) - Dose 1
OLH-SPRINGFIELD-POD(Springfield HS) - Dose 1
HC-CentralVT-Clinic (CVMC Conf Rm 1 and 2) - Dose 1
HC-LittleRivers-Clinic (Bradford Clinic) - Dose 1
HC-NOTCH-Clinic (Swanton Municipal Complex) - Dose 1
HC-RutlandRegional-Clinic (Leahy Community Ctr) - Dose 1
HC-SouthwesternVT-Clinic (Former College Gymnasium) - Dose 1
HC-UVMCC-Clinic (Essex Fairgrounds) - Dose 1

# VDH COVID-19 Vaccine Toolkit

- New: VDH COVID-19 [Vaccine Promotion Toolkit](https://drive.google.com/drive/folders/1jIJO4jYQNLjqGdddbKQYit3bBhfySXUhE) – please share with your networks!
  - ▣ <https://drive.google.com/drive/folders/1jIJO4jYQNLjqGdddbKQYit3bBhfySXUhE>
- Toolkit materials are separated into two sections by messaging type:
- Eligibility-specific, “alert” messaging (currently 75+):
  - ▣ Social media posts; Blog/Newsletter (additional assets will be added soon!); Email; Letter
- General, “evergreen” messaging about vaccines
  - ▣ Social media posts; Blog/Newsletter (additional assets will be added soon!); Posters (8.5”x11” and 11”x17”); Vaccine fact sheet
    - “Things You Should Know About COVID-19 Vaccines” (will be updated as needed)

# Weekly Data Summary- Childcare and COVID-19

## People with COVID-19 in Childcare Settings While Infectious

67

people with COVID-19 were  
in a childcare setting while  
infectious.

55

Childcare settings have  
been impacted.

There are over [1,100 registered programs](#) (childcare centers, pre-K, registered in-home providers and afterschool programs) in the State of Vermont. This analysis includes people who report working or attending a childcare setting, which could include any of these types of programs.

**Someone who was at childcare while infectious** means there were opportunities for the virus to spread to others in the childcare setting. [Read more about the infectious period.](#)

Vermont Department of Health

Source: Vermont Department of Health  
Reflects confirmed data as of 1/24/2021 37



# Weekly Data Summary- Childcare

## Outbreaks in Childcare Settings



Of the over 1,100 childcare programs, there have been **6** outbreaks impacting **6** childcare settings.



This includes a total of **21** cases.



On average, there are **3.5** cases per childcare facility outbreak.

### What is an outbreak in a childcare setting?

An outbreak is when there are two or more COVID-19 cases among children/students or teachers/staff with known connections in the educational setting, and the cases:

- have an illness start date or a positive test collection date within 14 days, **and**
- do not live together or have close contact with each other in another setting, **and**
- there is no other more likely source of exposure.

Vermont Department of Health

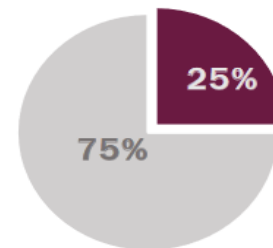
Source: Vermont Department of Health  
Reflects confirmed data as of 1/24/2021 38

# Weekly Data Summary-Childcare

## How much childcare-based transmission is occurring?

- Childcare facility-based transmission is occurring in a limited capacity, since the outbreaks are usually small and there have not been many outbreaks overall. Less than 1% of childcares in Vermont have had an outbreak.
- Transmission within childcare settings has happened too infrequently to draw any conclusion about the risk of spread.
- However, most people with COVID-19 who were at a childcare setting while infectious **do not spread to others while there (75%)**.

**25%** of cases present in a childcare setting were likely a result of **transmission within childcare settings**.



Source: Vermont Department of Health  
Reflects confirmed data as of 1/24/2021 39

# Friday Media Briefing (1/29/21)

## Governor Phil Scott

- Still time and slots for Vermonters over 75 to get appt
- Reinforced why older Vermonters are priority
  - ▣ Preservation of life
  - ▣ Will allow for economy to open economy and to end the state of emergency sooner
- Shared stories of isolation of elderly, Governor hasn't seen his mother in over a year



# Friday Media Briefing (cont'd.)



## AOE Secretary Dan French

- Surveillance data
  - ▣ last week 41 % participation, positivity rate = 0.08%
  - ▣ this week 35 % participation, zero positive results to date
- No decision about competition in winter sports (community data is a factor)
- Music in schools- committed to trying to find a path forward for music, meeting Feb 9<sup>th</sup>
- State Assessments- waived last year, waiting to see if Biden Administration will require them

# Friday Media Briefing (cont'd.)



## AHS Secretary Mike Smith:

- ❑ Over 48,000 doses of vaccine administered
  - ▣ Over 32,000 first doses
- ❑ 32,556 people registered in age 75 and older
- ❑ Still predicting middle to end of March for ages over 65 and over 70 completed
- ❑ This week received additional 1350 first doses- will increase Orange, Bennington, Lamoille counties, BIPOC communities and back to 1 A
- ❑ 10,375 doses each week for next 2 weeks

# Friday Media Briefing (cont'd.)



## AHS Secretary Mike Smith:

- ❑ Some confusion about 1A- Vermont will continue to vaccinate 1A
- ❑ Ongoing work with hospitals on who should be included in 1A
- ❑ No waiting list for extra doses but vaccine clinic sites have list of people eligible (home bound people, 1A category and Vermonters over 75 years)
- ❑ To prevent waste, district offices can use “Vermont common sense” to vaccinate those people available at the end of the day
- ❑ A few “bumps” but successful roll out to date- big thank you to everyone working on it



# Friday Media Briefing (cont'd.)



## AHS Secretary Mike Smith:

- On Wednesday, Secretary Smith and team decided to share the Springfield hospital Moderna vaccine situation. At that time, they chose transparency but mentioned that VDH was investigating (860 doses).
- It is now clear that the doses can be used- and Secretary is acknowledging this caused confusion

# Friday Media Briefing (cont'd.)



## VDH Commissioner Levine

- Cases are steady between 78-133 in last 3 days
- 7 day average is treading down, positivity rate is 2.0 percent
- Death numbers are low and less cases in LTCFs
- Uptick in hospitalizations- 57 patients
- Colleges- students returning
  - ▣ More cases on arrival and 7 days later
  - ▣ Athletic team cases- UVM. Castleton, Norwich (over 80 cases)
  - ▣ WE believe students travelled, maybe didn't quarantine, and learned that family members back home tested positive upon their arrival

# Friday Media Briefing (cont'd.)



## VDH Commissioner Levine

- Anecdotally from colleges- more symptomatic students, faster transmission
  - ▣ Sending college cases for genomic sequencing- won't know for a while
- This is exactly why we require college students to quarantine and test
  - ▣ UVM 6521 students (saliva testing at home) 15 positives (0.25%)
  - ▣ Champlain doing something similar- very few positives
- Springfield-Moderna situation
  - ▣ Specifics of the situation reviewed with hospital leadership and Moderna- it was determined that all of the doses are effective and safe

# Friday Media Briefing (cont'd.)



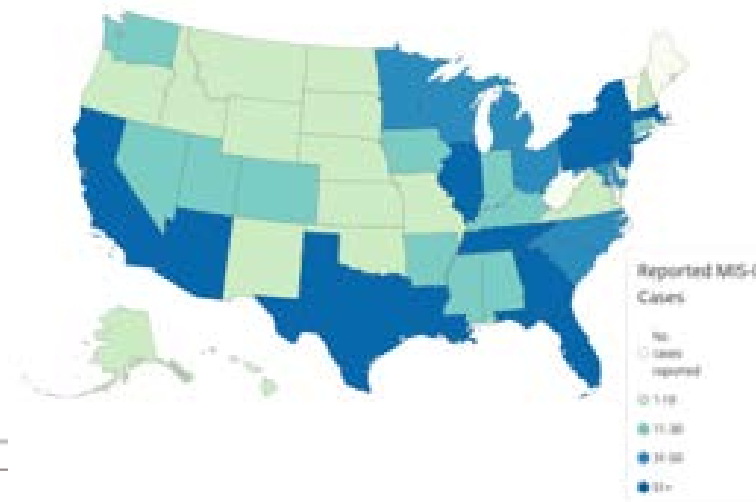
## VDH Commissioner Levine

- To date in Vermont we have had only 99 doses (0.1 percent) considered non-viable- very low
  - ▣ So proud of our teams- especially in local health offices
  - ▣ WIC, School Health, Immunization- shout out to community connections
  
- A few tips for getting vaccine
  - ▣ Come early but not too early (15 minutes). Only bring one person if you need support, wear a mask, dress for weather, stay in car
  - ▣ Might not be protected for a few weeks after the vaccine and all prevention behaviors should continue (masks, distance)

# Practice Issues

## *MIS-C Update*

*Kristin P. Crosby, MD – Pediatric Critical Care Medicine, UVM CH*



# Multisystem Inflammatory Syndrome in Children MIS-C

---

KRISTIN P. CROSBY, MD

PEDIATRIC CRITICAL CARE MEDICINE

UNIVERSITY OF VERMONT CHILDREN'S HOSPITAL



02/2020

- Initial reports from China indicated children less severely affected by COVID-19 than adults
- Retrospective case series of 2135 children reported less than 5% children affected with SARS-CoV-2 had severe disease with only 1 pediatric death (Dong et al, 2020)

04/2020

- National Health Service (NHS) in UK issued an alert regarding pediatric patients presenting with Kawasaki-like syndrome termed pediatric inflammatory multisystem syndrome temporally associated with SARS-CoV-2 (PIMS-TS) (Viner et al, 2020; Riphagen et al, 2020)

05/2020

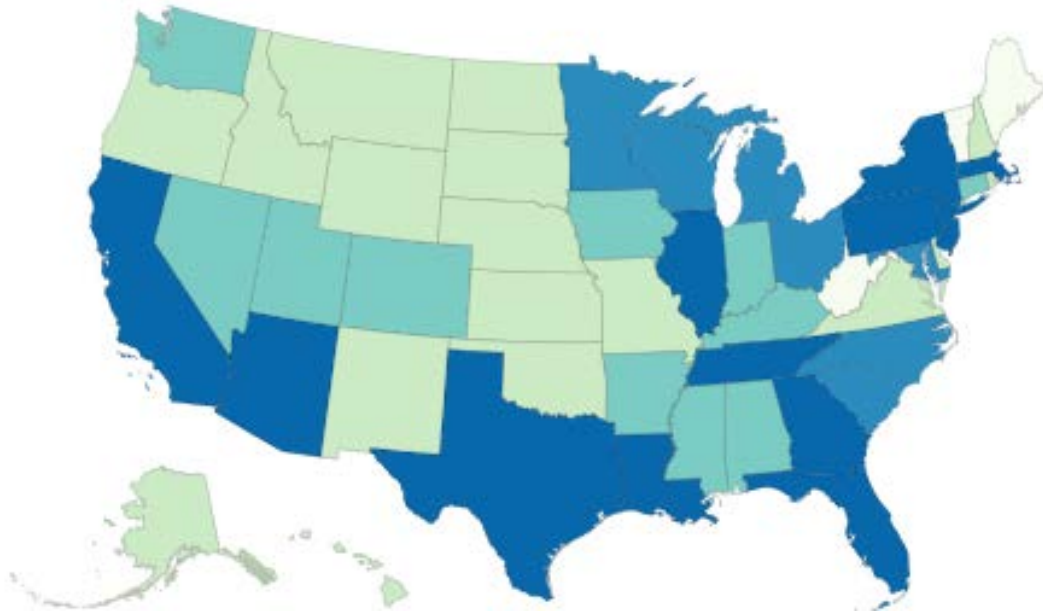
- CDC issued an alert describing new entity termed Multisystem inflammatory syndrome in children (MIS-C) associated with COVID-19

07/2020

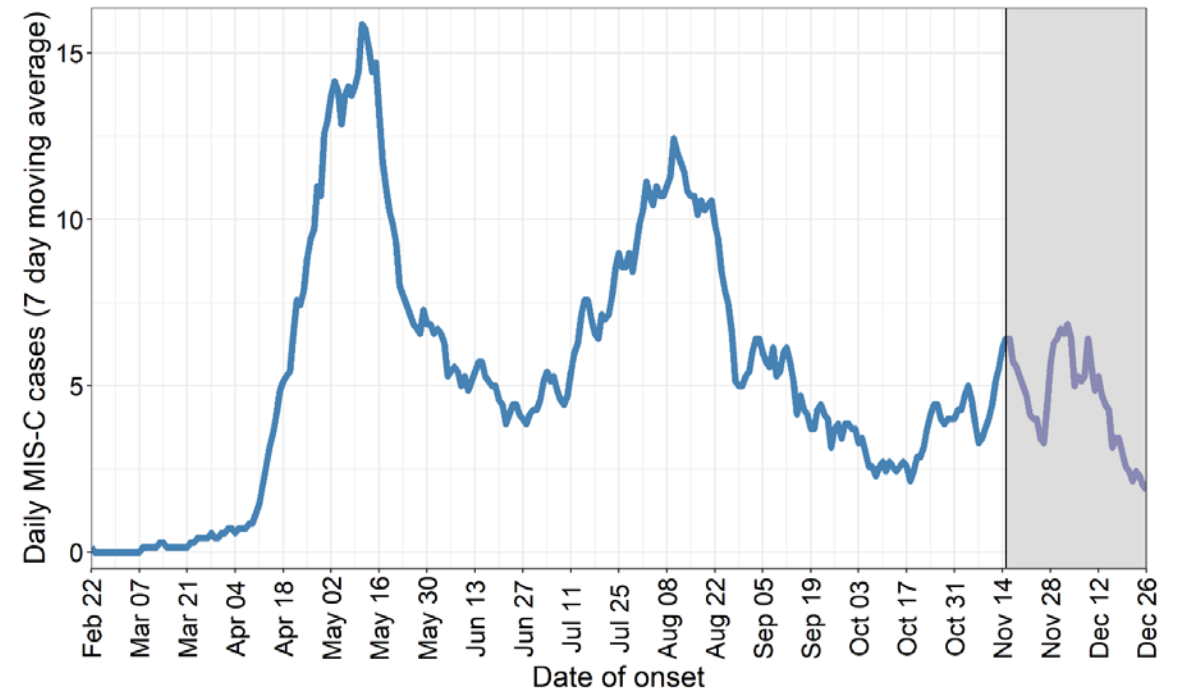
- As of 7/29/2020 a total of 570 U.S. MIS-C cases had been reported to the CDC

# MIS-C Cases

MIS-C Cases Ranges by State



Daily MIS-C Cases



# Epidemiology

Total MIS-C Cases:

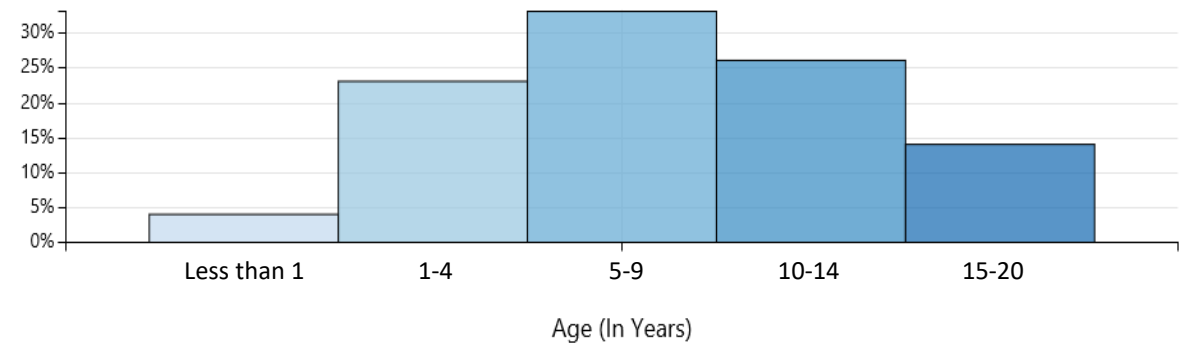
**1,659**

Total MIS-C Deaths:

**26**

- Occurs in 2 of 200,000 individuals (< 21yo)
- Average age 8 years
- > 70% cases in children who are Hispanic/Latino or Black/non-Hispanic
- Most develop MIS-C 2-4 weeks after infection with SARS-CoV-2
- 57% of cases were male

Cases by Age Group



# Case Definition

---

- Individual aged < 21 years presenting with:
  - Fever > 38°C or report of subjective fever for 24 hours or more
  - Laboratory evidence of inflammation:
    - ↑ CRP/ESR/fibrinogen/procalcitonin/D-dimer/ferritin/LDH/IL-6
    - ↑ neutrophils, ↓ lymphocytes, ↓ albumin
  - Evidence of clinically severe illness requiring hospitalization
  - Multisystem (2 or more) organ involvement: cardiac, renal, respiratory, hematologic, gastrointestinal, dermatologic, or neurological

AND

- No alternative plausible diagnosis

AND

- Positive for current or recent SARS-CoV-2 infection by RT-PCR, serology or antigen test OR COVID-19 exposure within the 4 weeks prior to onset of symptoms

# Clinical Syndrome

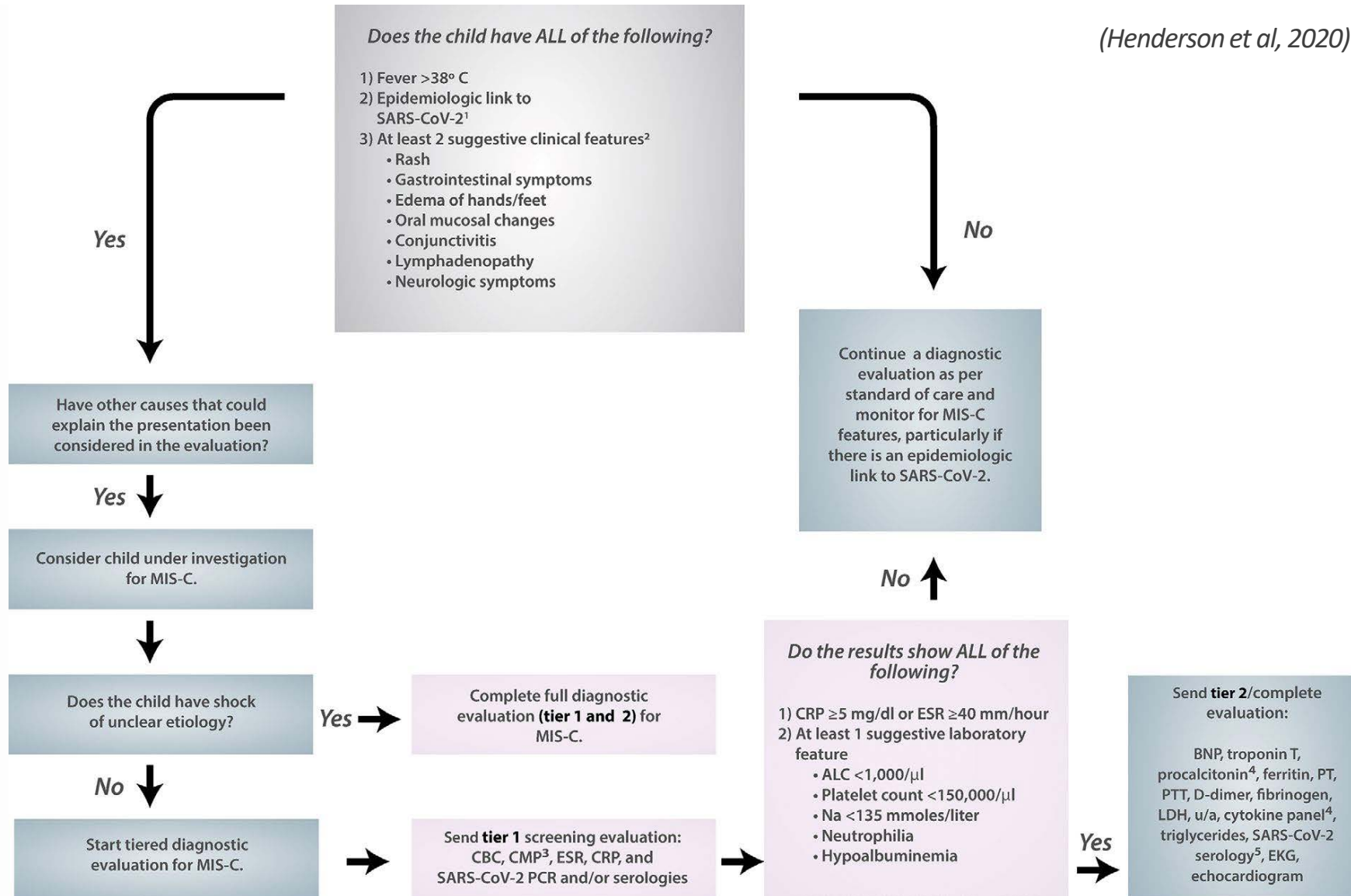
---

## Physical Exam:

- HEENT: **bilateral conjunctival injection without exudate, erythematous or cracked lips, strawberry tongue or erythema of oropharyngeal mucosa**
- Neck: **Cervical lymphadenopathy**
- CV: **myocardial dysfunction, cardiac conduction abnormalities**
- Respiratory: crackles, symptoms of pulmonary edema
- GI: diffuse abdominal tenderness
- Neuro: altered mental status, encephalopathy, focal neurologic deficits, meningismus or papilledema
- Skin: Rash- polymorphic, maculopapular or petechial (NOT vesicular)
- Extremities: **Edema of hands and/or feet**

Figure 1. Diagnostic pathway for multisystem inflammatory syndrome in children MIS-C

(Henderson et al, 2020)





# Inpatient Evaluation

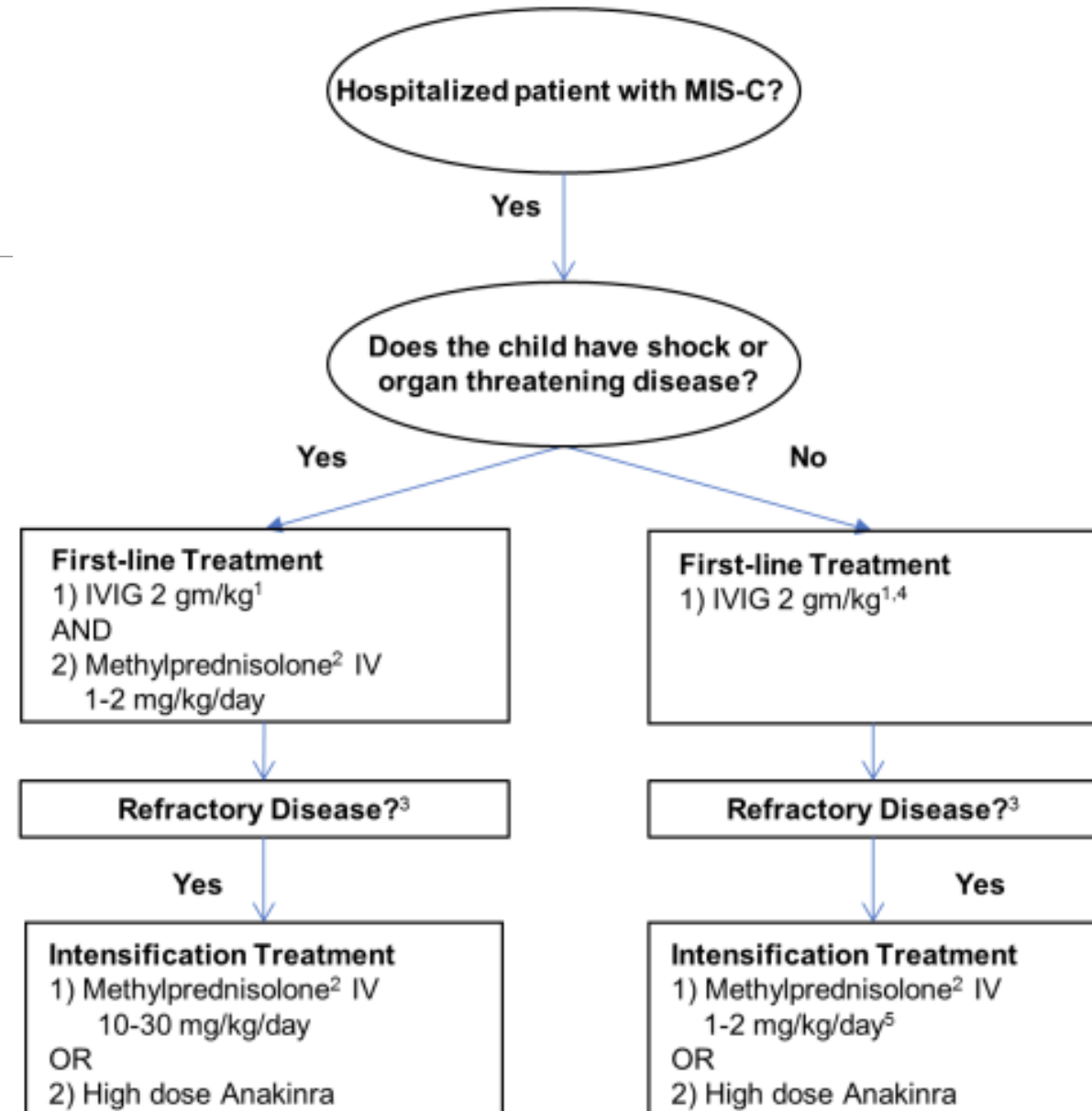
---

- Labs:
  - CBC
  - Complete Metabolic Panel
  - CRP, ESR, Ferritin, LDH
  - Coagulation: D dimer, Fibrinogen, PT/PTT, INR
  - Cardiac: Pro-BNP, Troponin
  - SARS-CoV-2 IgG/IgM Ab & PCR
- Imaging
  - CXR 2 views
  - EKG, Echocardiogram
- Consults
  - Infectious disease
  - Cardiology
  - Rheumatology
  - Hematology
  - Nephrology
  - PICU
- Admission
  - Pediatric Floor: MIS-C diagnosis or suspected diagnosis
  - Pediatric ICU: MIS-C diagnosis with evidence of shock, cardiac dysfunction

	Kawasaki Disease	MIS-C
Demographics:		
Racial/Ethnic Distribution	Highest incidence in children of Japanese descent	MIS-C highest incidence in patients of African and Hispanic descent
Age Distribution	Primarily children 5 years or younger	Broad age distribution, 3 months to 17 years
Clinical presentation:		
Cardiovascular	Less than 10% of children present with Kawasaki shock syndrome	Cardiac dysfunction, arrhythmias and shock
	25% of untreated KD will develop coronary artery aneurysms	Unclear if incidence of coronary artery aneurysms differs
GI/Neurologic	Less commonly present with GI and neurologic symptoms	Retrospective cohorts show common presentation with GI and neurologic symptoms
Laboratory Values		Lower platelet counts, lower absolute lymphocyte counts, higher CRP levels

# Treatment

- Supportive therapy:
  - Fluid resuscitation
  - Vasoactive agents
  - Respiratory support
  - ECMO in rare cases
- Immunomodulatory treatment
  - Depends on severity of symptoms
- Antiplatelet/anticoagulation therapy
  - Patients with MIS-C and coronary artery involvement
    - Aspirin 3-5mg/kg/day (max 81mg/day)
  - MIS-C with CAAs with high z-score, thrombosis or EF < 35%
    - Therapeutic anticoagulation



# Follow Up

---

- Primary care provider upon discharge from hospital
- Cardiology:
  - EKGs every 48 hours in hospitalized patients and during follow up visit
  - Follow up echocardiogram 7-14 days and 4-6 weeks after presentation
  - More frequent follow up if LV dysfunction or CAAs present
  - Consideration of cardiac MRI 2-6 months after diagnosis in patients with severe/persistent LV dysfunction
  - Patients with myocardial dysfunction may need activity restrictions based on cardiology recommendations
- Additional subspecialist follow up:
  - Hematology is on therapeutic anticoagulation
  - Nephrology, pulmonology, rheumatology, neurology
  - Depending on initial presenting symptoms, persistence of exam findings and organ involvement

---

Thank You

# References

---

1. Dong Y, et al. Epidemiology of COVID-19 among children in China. *Pediatrics*. 2020;145(6):e20200702.
2. Viner RM, Whittaker E. Kawasaki-like disease: emerging complication during the COVID-19 pandemic. *Lancet*. 2020;395(10239):1741–1743.
3. Riphagen S, Gomez X, Gonzalez-Martinez C, Wilkinson N, Theocharis P. Hyperinflammatory shock in children during COVID-19 pandemic. *Lancet*. 2020;395(10237):1607–1608.
4. Verdoni L, Mazza A, Gervasoni A et al. An outbreak of severe Kawasaki-like disease at the Italian epicenter of the SARS-CoV-2 epidemic: an observational cohort study. *Lancet*. 2020. 295(10239): 1771-1778.
5. Henderson LA et al. American College of Rheumatology Clinical Guidance for Multisystem Inflammatory Syndrome in Children Associated With SARS-CoV-2 and Hyperinflammation in Pediatric COVID-19: Version 1. *Arthritis Rheumatol*. 2020 Nov;72(11):1791-1805.
6. Aronoff SC, Hall A, Del Vecchio MT. The natural history of Severe Acute Respiratory Syndrome Coronavirus 2-Related Multisystem Inflammatory Syndrome in Children: A Systematic Review. *Journal of the Pediatric Infectious Disease Society*. 2020;

# (VT) Resources on Equity, Diversity & Inclusion

*Thank you, Melissa Kaufold*

- VPR/Vermont Edition (1/19/21): *Is Vermont Doing Enough to Address Racial Inequities in Its Vaccine Program?*
  - ▣ Guests: **Mohamed Abdullahi**, Somali refugee & interpreter (community health liaison w/Burlington's Trusted Community Voices program) & **Tracy Dolan**, VDH Deputy Commissioner
  - ▣ <https://www.vpr.org/post/vermont-doing-enough-address-racial-inequities-its-vaccine-program#stream/0>
- VT House and Senate training on implicit bias prevention (1/19/21)
  - ▣ Presented by **Bor Yang**, Exec. Director VT Human Rights Commission, and **Xusana Davis**, VT Executive Director of Racial Equity (focus on policymaking)
  - ▣ <https://www.youtube.com/watch?v=nxvaXDrHa44&feature=youtu.be>



# Multilingual Resources

<https://www.youtube.com/channel/UC3zjPpeFnXqvESr1y3d4DvQ>



Vermont Multilingual Coronavirus Task Force

157 subscribers

SUBSCRIBE

HOME

VIDEOS

PLAYLISTS

CHANNELS

ABOUT

ARABIC

▶ PLAY ALL



ARABIC: Facts about the Covid-19 vaccine.

Vermont Multilingual Coronavi...  
205 views • 5 days ago



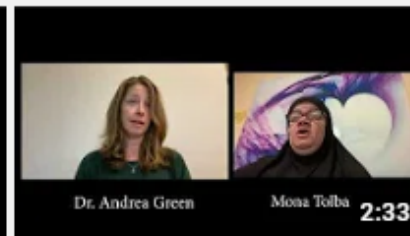
ARABIC: Self test for Covid-19. How to do it!

Vermont Multilingual Coronavi...  
53 views • 1 month ago



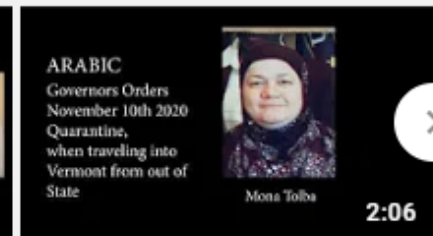
ARABIC: Free coronavirus testing in Winooski and...

Vermont Multilingual Coronavi...  
16 views • 1 month ago



ARABIC: An important message from Dr Andrea...

Vermont Multilingual Coronavi...  
29 views • 1 month ago



ARABIC: Governors orders re travel into Vermont from...

Vermont Multilingual Coronavi...  
15 views • 2 months ago

BURMESE

▶ PLAY ALL

# In Case You Missed It...



UVM/LCOM Martin Luther King, Jr. Day Event (presented 1/20/21)

- Offices of the President; VP for Diversity, Equity & Inclusion; Department of Student Life
  - ▣ Topic – ***Health Deficit: The Journey to Health Parity***
  - ▣ Keynote Speaker: **Leon McDougale, MD, MPH** – 1<sup>st</sup> African American Professor w/tenure, Ohio State University Department of Family Medicine; 1<sup>st</sup> Chief Diversity Officer for the OSU Wexner Medical Center; 121<sup>st</sup> President of the National Medical Association/NMA
- **We will share link as soon as recording available**



# ***In Case You Missed It...***

[Find slides, call recording at: [https://www.med.uvm.edu/vchip/projects/vchip\\_champ\\_vdh\\_covid-19\\_updates](https://www.med.uvm.edu/vchip/projects/vchip_champ_vdh_covid-19_updates)]

## **AAP-VT TASK FORCE ON RACE & HEALTH EQUITY**

Rebecca Bell, MD, MPH  
AAP-VT Chapter  
1.18.21

# Happening Now



- Big Change Roundup: [bigchangeroundup.org](http://bigchangeroundup.org)
  - Largest fundraiser for the UVMCH; funds raised support patients and families.
  - Examples: some child life services; new program startup (e.g., Transgender Program; safe sleep program on Mother Baby Unit); injury prevention initiatives; food insecurity initiative (CSC); support for inpatient families (ferry passes, gas cards, meal vouchers)
- Please help to promote personally as you are able and through your practices/organizations

# Questions/Discussion

- ❑ Q & A Goal: monitor/respond in real time; record/disseminate/revisit later as needed.
- ❑ **For additional questions, please e-mail:** [vchip.champ@med.uvm.edu](mailto:vchip.champ@med.uvm.edu)
  - ❑ **What do you need** – how can we be helpful (specific guidance)?
- ❑ **VCHIP CHAMP VDH COVID-19 website:**  
[https://www.med.uvm.edu/vchip/projects/vchip\\_champ\\_vdh\\_covid-19\\_updates](https://www.med.uvm.edu/vchip/projects/vchip_champ_vdh_covid-19_updates)
- ❑ Next CHAMP call – ***Monday, February 1, 2021 – 12:15-12:45***
- ❑ Generally back to **Monday/Wednesday/Friday** schedule
- ❑ Please tune in to VMS call with VDH Commissioner Levine: (special topic next week)  
***Thursday, February 4, 2021 - 12:30-1:00 p.m. – Zoom platform & call information:***
- ❑ **Join Zoom Meeting:**  
<https://us02web.zoom.us/j/86726253105?pwd=VkVuNTJlZFQ2R3diSVdqdlJ2ZG4yQT09>
  - ❑ Meeting ID: 867 2625 3105 / Password: 540684
- ❑ One tap mobile - +1 646 876 9923,,86726253105#,,,0#,,540684#