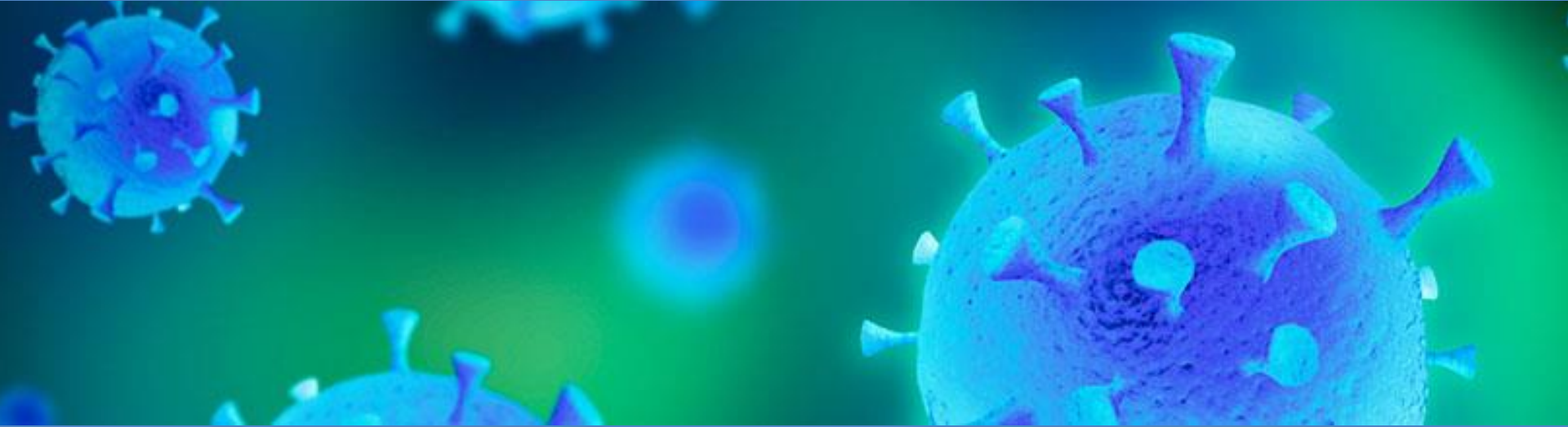


VCHIP / CHAMP / VDH COVID-19 UPDATES



Wendy Davis, MD FAAP - Vermont Child Health Improvement Program, UVM

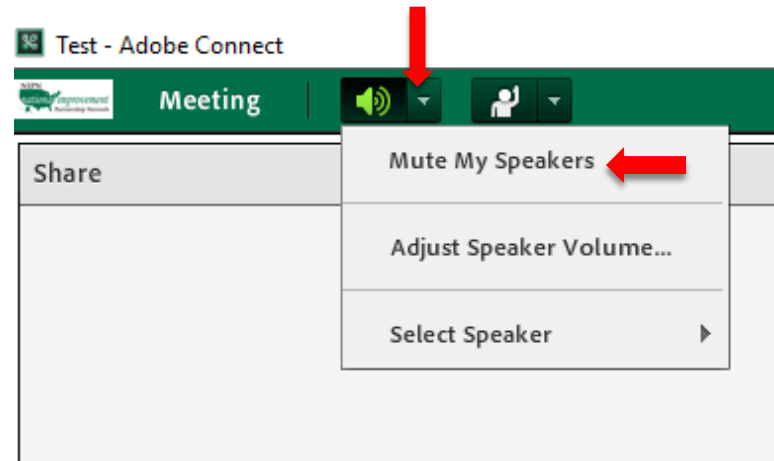
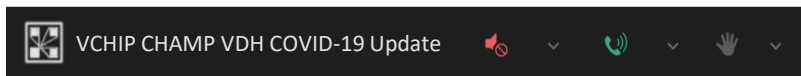
*Breena Holmes, MD FAAP – Director of Maternal & Child Health, Vermont Department
of Health*


March 18, 2020

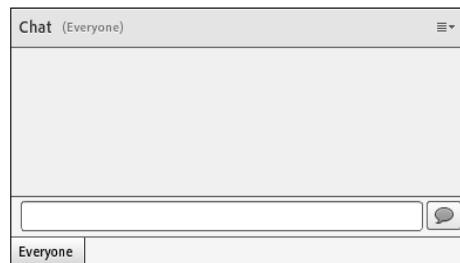
Technology Notes

1) Please remember to mute the phone line and/or mute the speakers on your computer.

If you dialed in or out, mute by pressing *6 (#6 to unmute) on your phone



2) To ask or respond to a question using the **Chat** box, type your question and click the  icon to send.



Objectives

- Situation update
 - ▣ Surveillance
 - ▣ New guidance: child care, home-based service delivery.
 - ▣ PPE
- Sharing practice strategies
 - ▣ Essex Pediatrics
- Question and answer
 - ▣ Feedback re: call format, frequency, content

Situation Update

- **3/17/20:** VDH lab received 227 samples; prioritized & ran 97.
- Establishing lab portal for providers to review results on line.
- VT residents test-pos. = 10 (7 non-res pos.) Daily update 1pm:
<https://www.healthvermont.gov/response/infectious-disease/2019-novel-coronavirus>
- Testing
 - **Criteria:** fever, cough, SOB.
 - Remember to consider influenza and RSV.
 - **Priorities:** admissions/hospitalized patients; health care workers with sx's or close contact with suspect/pos. case (within 14d. sx onset) or relevant travel hx; high-risk groups.
 - Submission: call VDH ID/Epi (**802-863-7240**) to coordinate infec. control/submission/form completion. (UVM CH/MC has internal system)

Situation Update (cont'd.)

□ New guidance: **child care**

- Closure period (3/18/20-4/6/20): now pre-K through 12 schools and state-regulated child care programs
- Continue care to enrollees who are children of “Essential Persons”
- ≤ 10/classroom; no large group activities
- Follow existing regulations
- Frequent, thorough cleaning daily
- Staff and enrollees stay home when ill
- No outside visitors/volunteers (except special ed. svcs.)

<https://www.healthvermont.gov/sites/default/files/documents/pdf/vdh-dcf-aoe-technical-guidance-early-childhood-programs-closure-dismissal-covid19.pdf> [NOTE: revised guidance expected]

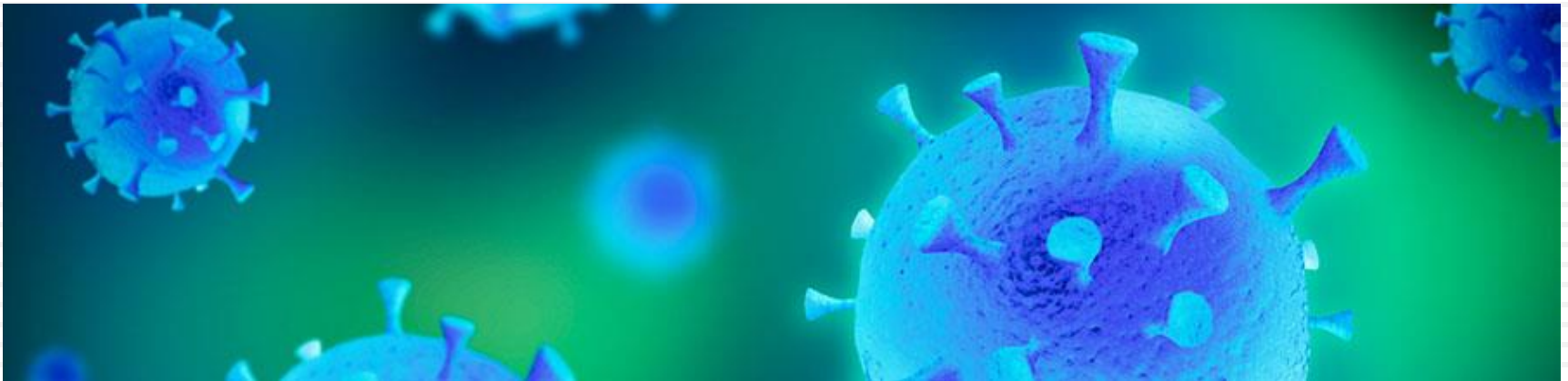
Situation update (cont'd.)

- New guidance: **home-based service delivery**
 - ▣ Essential: virtual when possible; screening questions if in-person required.
 - ▣ Non-essential: suspend all FTF visits – virtual when possible.
 - ▣ WIC: 1st visit in person, then virtual (awaiting Cong. change)
 - ▣ Lactation consultation – moving to virtual. Partner re: wt. checks?
- PPE: SEE VDH guidance
 - ▣ PPE Conservation Measures/Contingency Operations
 - ▣ PPE Strategies for Scarce Resource Situations
 - ▣ Submit request at:
<https://www.surveygizmo.com/s3/5504100/COVID-Resource-Request-Form>
- Larner COM: (3/17) suspend all med student clinical activities. Match Day celebration – students at home.

Practice Implementation Strategies

Essex Pediatrics

Essex Junction, Vermont



Questions/Discussion

- During Q & A, we will monitor and try to respond to questions in real time. Depending upon volume, we may need to record and send out responses later today (can also briefly revisit tomorrow).
- For additional questions, please e-mail:
 - vchip.champ@med.uvm.edu
- Next call: ***tomorrow, March 19, 12:15-12:45*** (same webinar/call information – invitation to follow)