

The Future of Modern Research Space

Larner College of Medicine and College of Arts and
Sciences Department of Psychological Science

Town Hall

April 3, 2018



The University of Vermont
LARNER COLLEGE OF MEDICINE

Project Overview – Medical Research Complex

- A new building and a renovation of Given for the Larner College of Medicine and the College of Arts and Sciences Department of Psychological Science.
- Multi-college project supported by the UVM Board of Trustees, Medical Center and Health Network leadership.
- Project leadership team has been appointed.



Larner College of Medicine Research

1. Financial:

- a) Annual research funding \$74 – 94 million;
- b) Over **7 to 9 times** the **ROI** of the other public Medical Colleges;
- c) **Top 10** state in **NIH funding** per capita;
- d) The **majority** of UVM **start-ups** are associated with Larner College.

2. This world-class research attracts top graduate students.

3. Research success disproportionally affects medical school **rankings**.

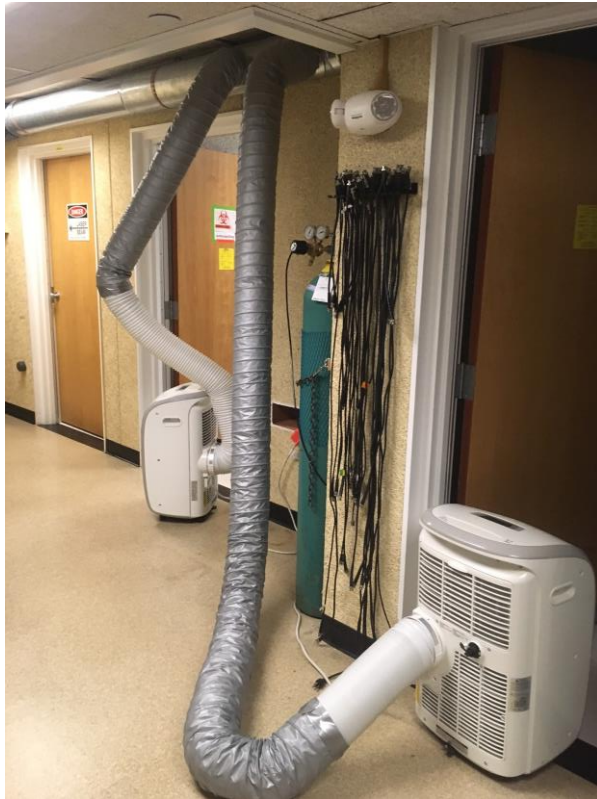
4. Research **improves citizens' lives** – in our state, nation and world.



The Problem – Given 1963



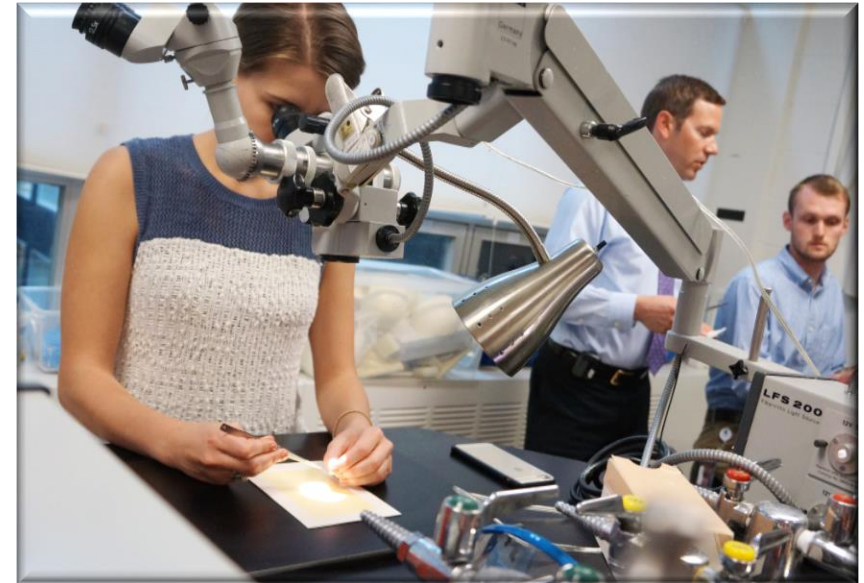
Current status – Systemic deferred maintenance defeats piecemeal rehabilitation



The Vision

Create modern research space to **support the performance and growth** of our research enterprise.

Design principles will highlight **flexible, open, and collaborative** spaces that share resources efficiently.



The Vision: Funding

The current budget is approximately \$90 million for both the new building and the rehabilitated Given building.

Funding Sources

- The University
- The College
- The Alumni
- The Department Chairs/Medical Group



College of Arts and Sciences

Psychological Science:

- The largest major at UVM
- Teaching nearly 12,000 credit hours per year
- Most research productive of CAS departments
 - \$1.6 million annual grants
 - Research productivity places it in the top quartile of departments nationally
- Vermont Psychological Services Clinic
 - High quality, evidence-based, psychological services



The Problem – Dewey Hall 1905

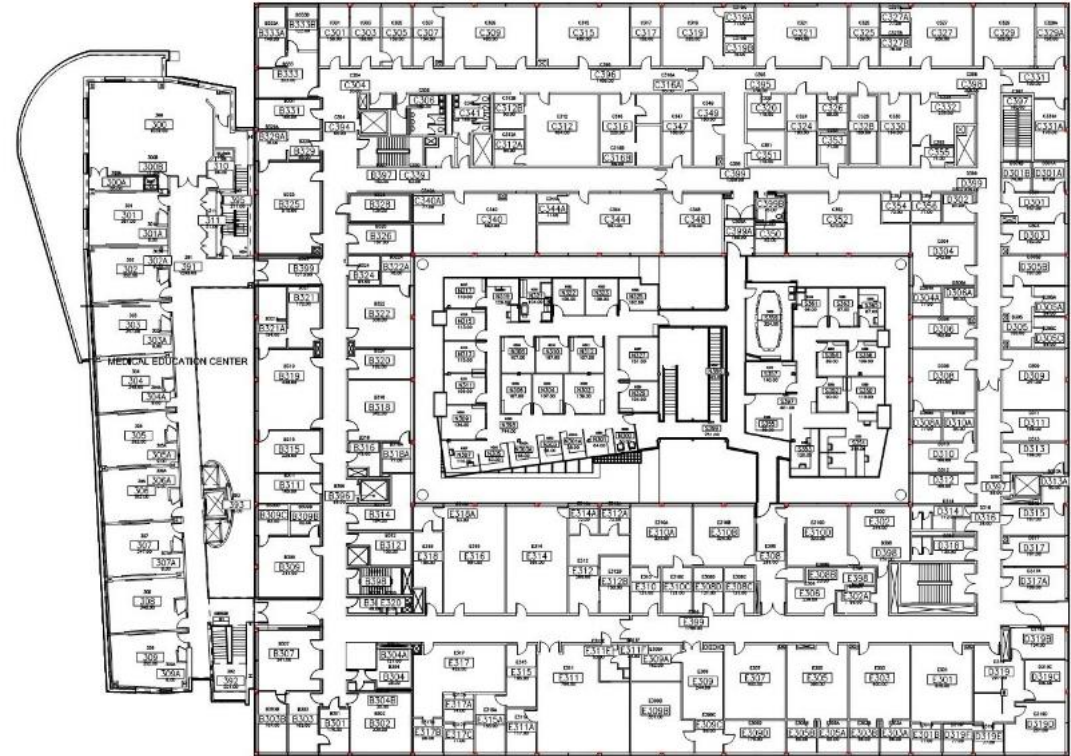


Current Dewey status



Vision: College of Arts and Sciences

- New, flexibly designed research space in the Given building.
- Common and shared resources.
- Prime location in the heart of the research campus.



Project Description

Architectural Team:

- Jim Collins - Payette Associates, Boston
- Keith Robinson - Black River Design, Montpelier





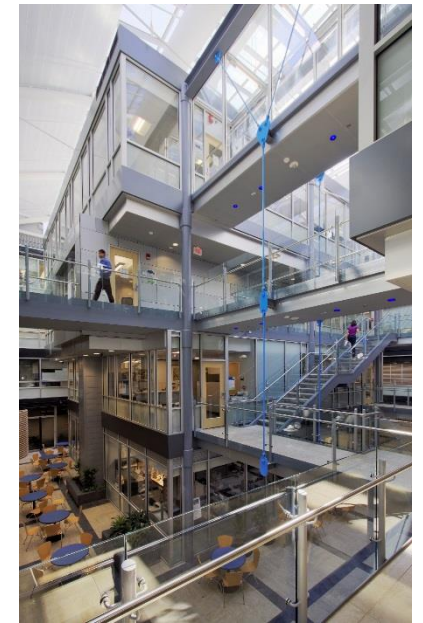
RESEARCH LAB TRENDS

AGENDA

- 1 Project Overview
- 2 Trends
- 3 New Laboratory
- 4 Discussion

PAYETTE- BLACK RIVER DESIGN FACTS

- Think Tank Environment in Innovation District
- Experience with **21 of the Top 50 Research Institutions**
- Integrated **Building Science** Group, Visualization, FabLab
- **National Leaders in Science, Research and Healthcare Design**
- Local Vermont Office and Experience with Vermont Consultant Team
- Over 50 Successful Projects with UVM: **Over 25 with the LCOM Alone**
- Familiarity with **UVM's Standards and Personnel**



MISSION AND OBJECTIVES | PROJECT GOALS

Provide **modern facilities** for the Larner College of Medicine and Psychology Department

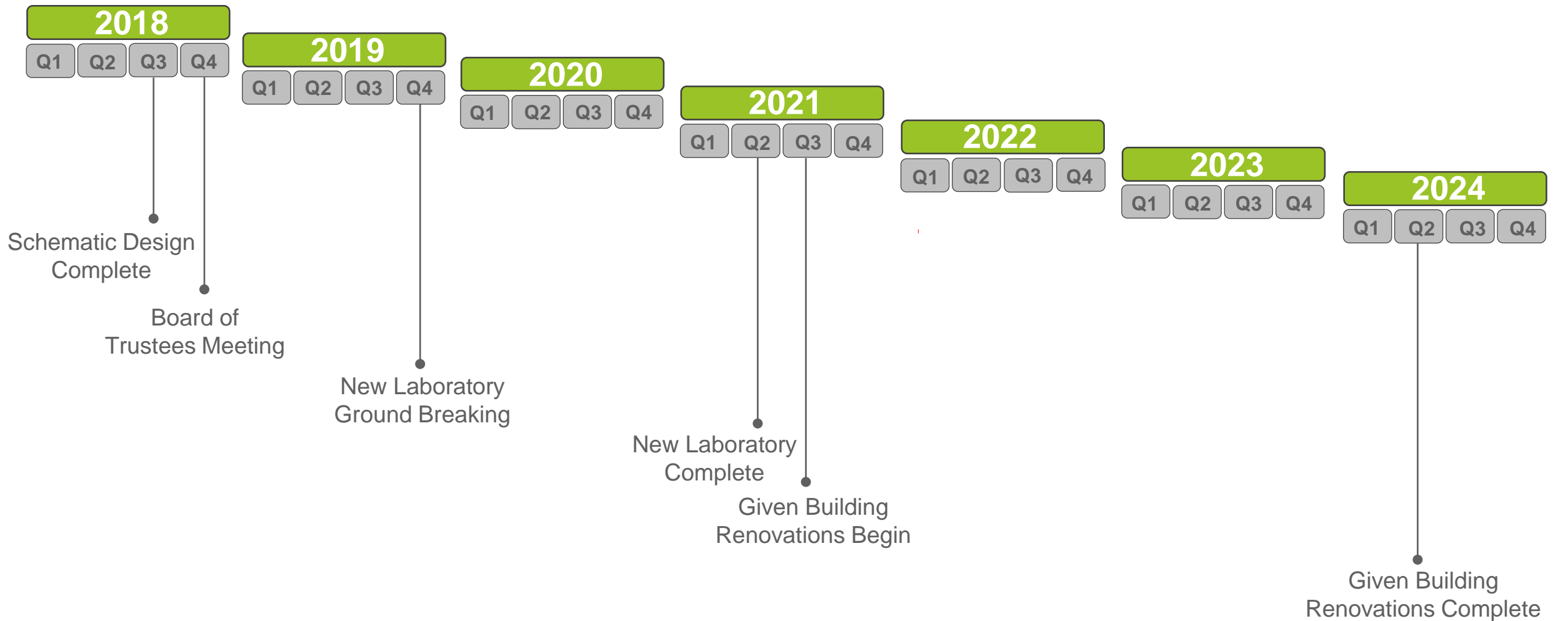
Provide the same amount of space currently available, no net increase to square footage

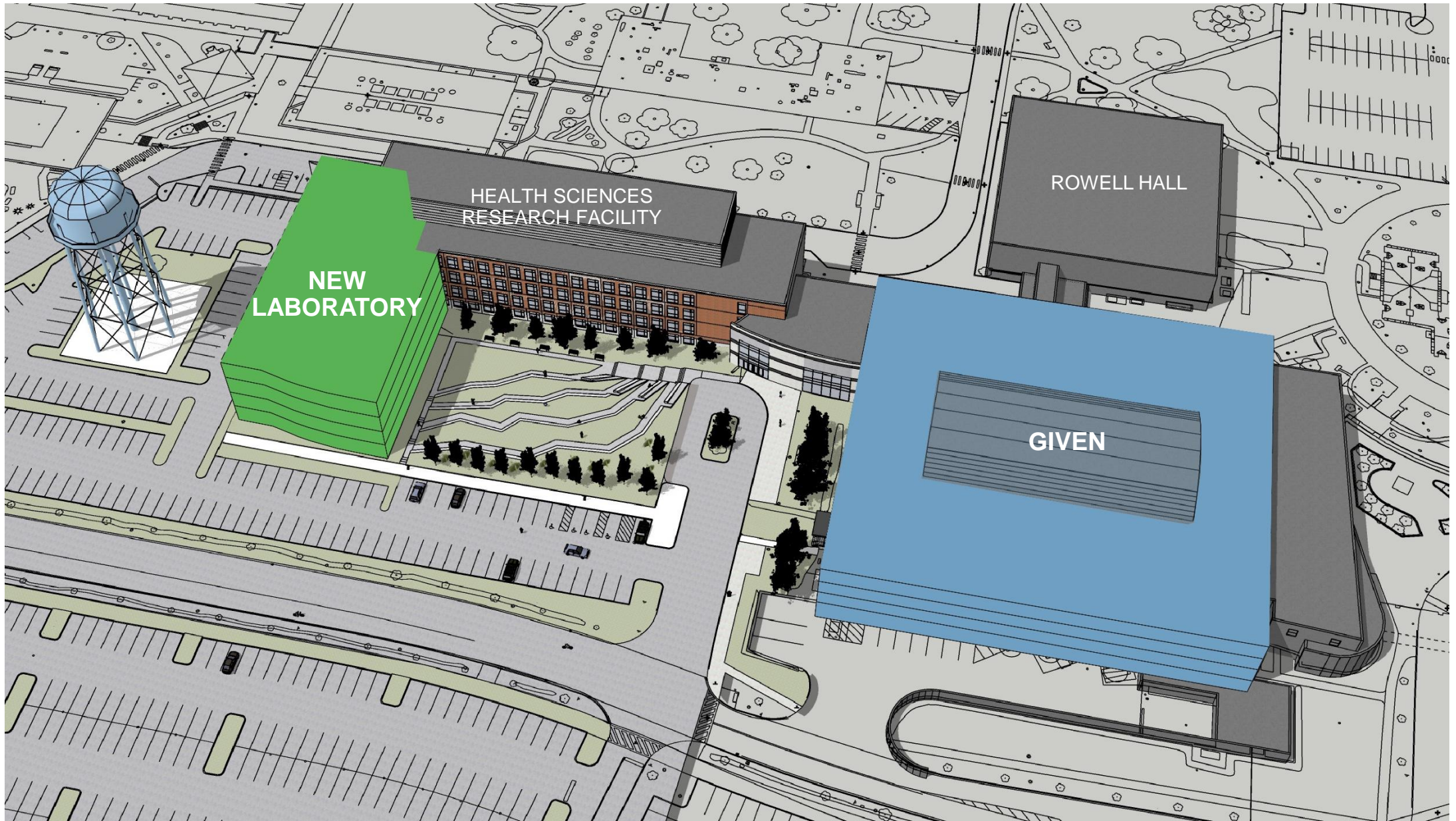
Construct a new laboratory building attached to the southeast side of Health Sciences

Research Facility (HSRF); new construction to be **laboratory and associated office space**

Renovation of Given Building for a new 50 year life

SCHEDULE | Overview



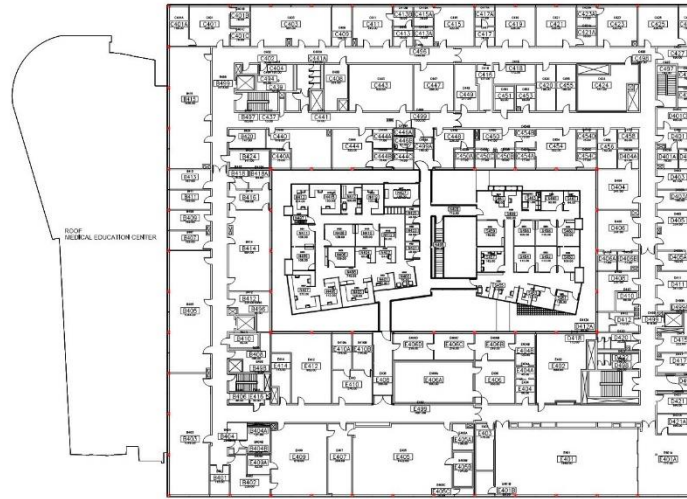




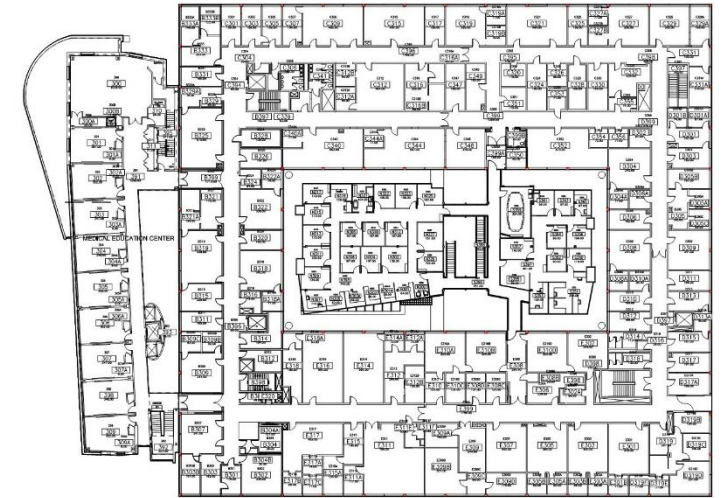
GIVEN RENOVATIONS

GIVEN BUILDING | RENOVATIONS

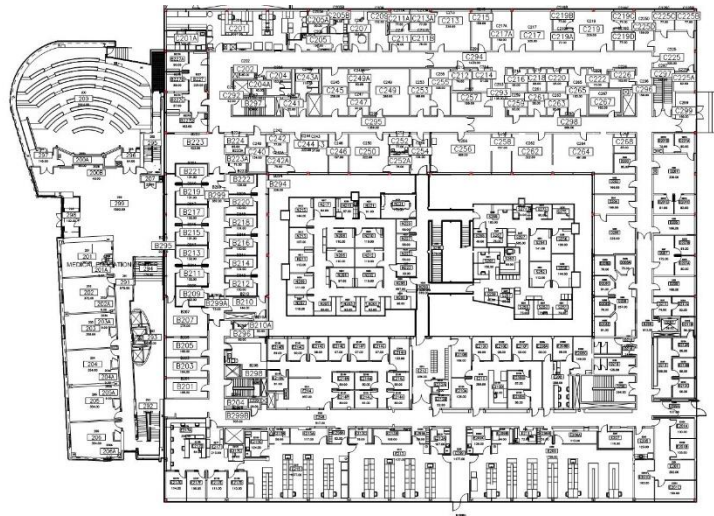
- Replace building exterior façade
- Upgrade building mechanical systems
- Upgrade building electrical systems as required
- Replace roofing
- Update building to meet current building code requirements
- Update building to meet current accessibility requirements
- Interior renovations as required to accommodate new or relocated occupants



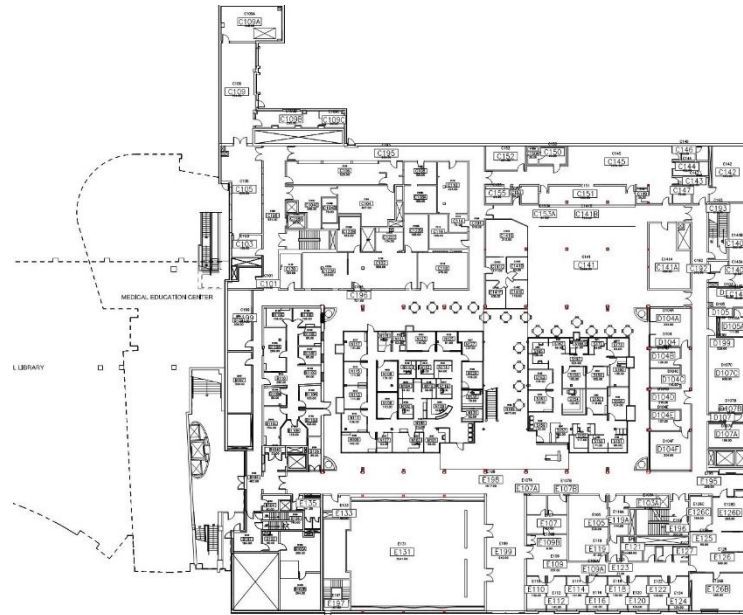
Fourth Floor



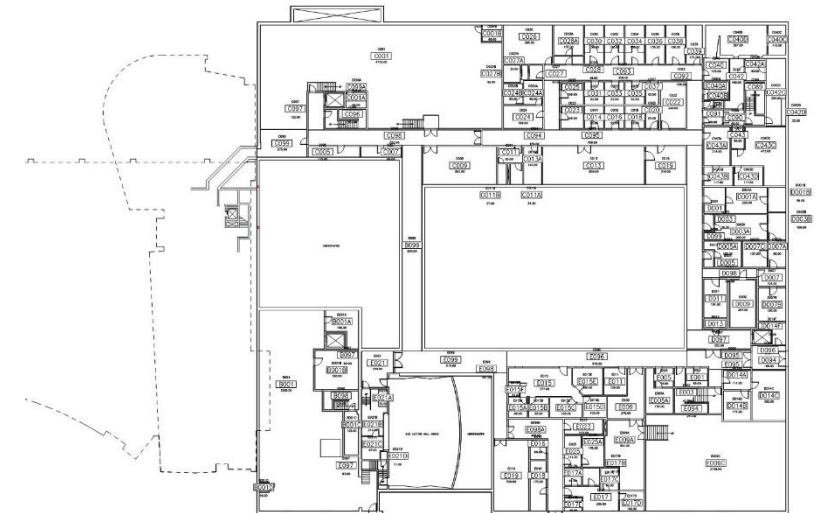
Third Floor



Second Floor



First Floor



Basement



NEW RESEARCH LABORATORY

TRENDS IN RESEARCH BUILDINGS

Flexibility / modularity of labs

Transparency and daylight

Collaboration and interaction

Shared resources / cores

Sustainable infrastructure



Cornell University - Kimball Hall Renovation

FLEXIBILITY



Boston University – Center for Integrated Life Sciences and Engineering (CILSE)

FLEXIBILITY



Harvard University – Sherman Fairchild Renovation



Boston University – Center for Integrated Life Sciences and Engineering (CILSE)



Tufts University – Science and Engineering Complex (SEC)

TRANSPARENCY



Boston University – Center for Integrated Life Sciences and Engineering (CILSE)

TRANSPARENCY



Tufts University – Science and Engineering Complex (SEC)

COLLABORATION

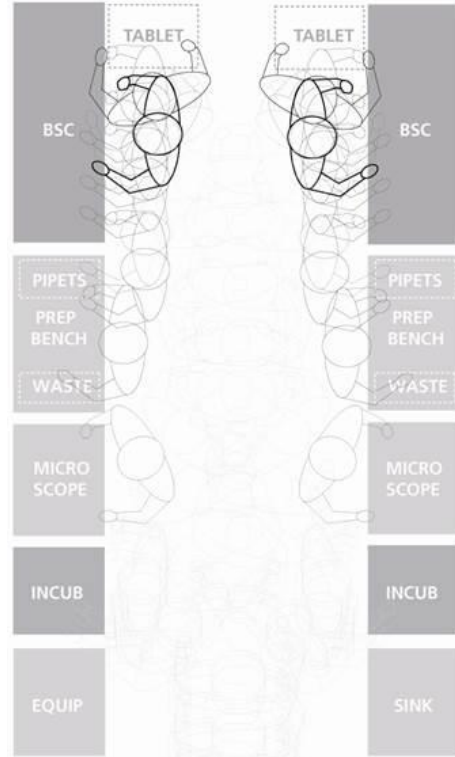


Harvard University – Memorial Church Renovation

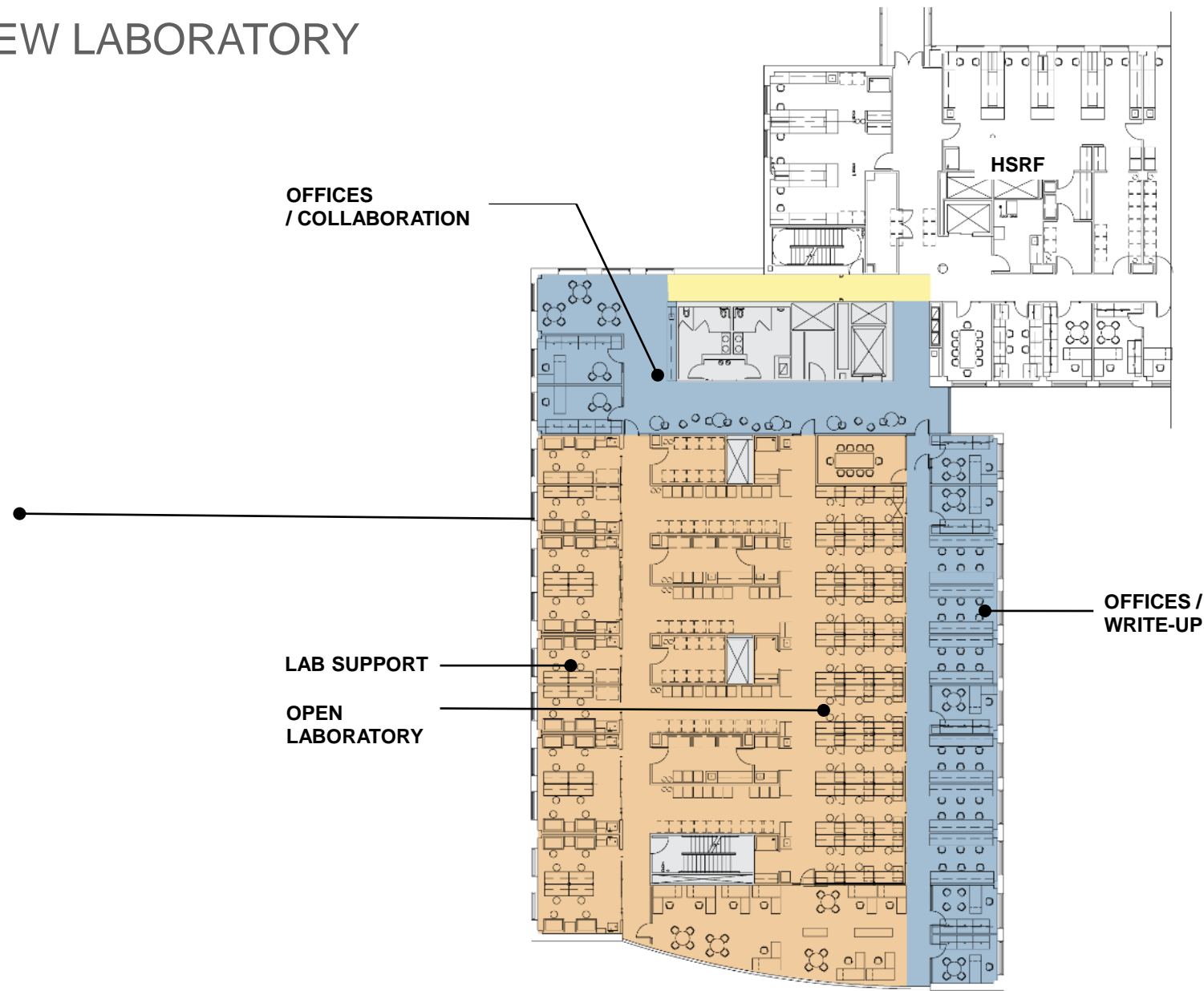
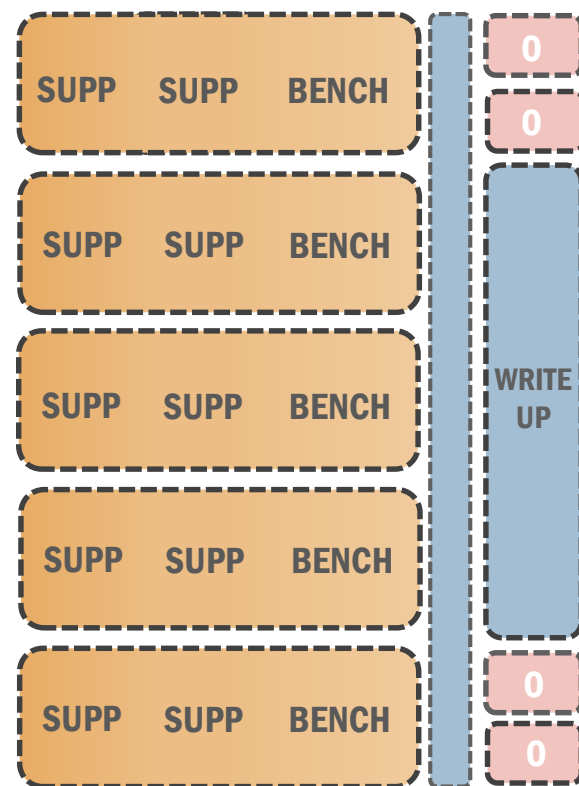
COLLABORATION

LABORATORY PLANNING | DATA DRIVEN

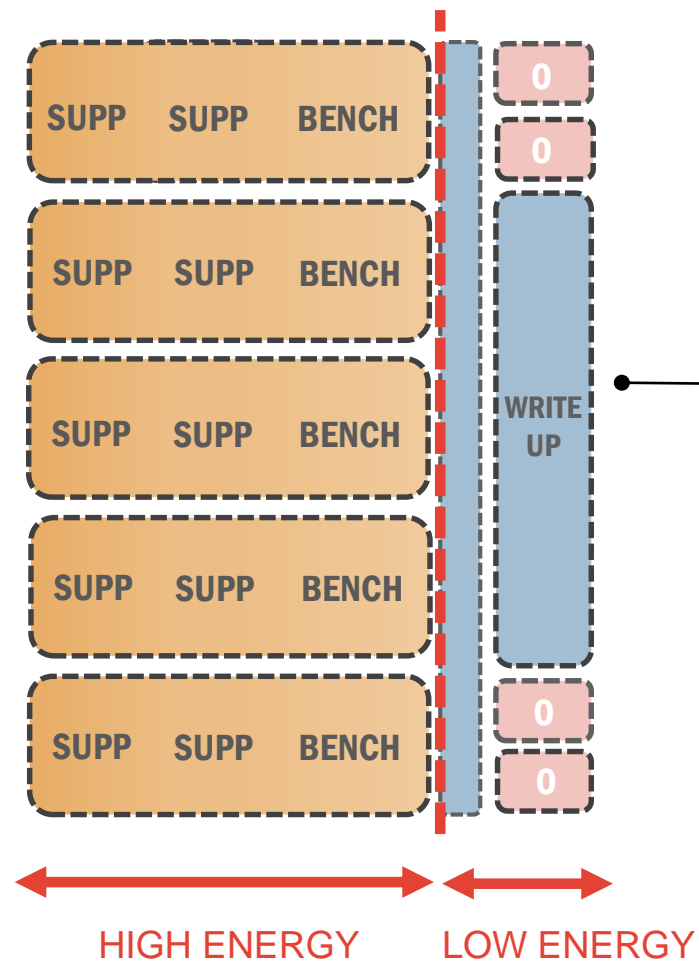
- Examine and Observe
- Analyze Equipment Usage
- Study Circulation / Flow
- Tour, Build Mock-ups, Draw and Document Solutions



LABORATORY PLANNING | NEW LABORATORY



LABORATORY PLANNING | NEW LABORATORY



OFFICES
/ COLLABORATION

LAB SUPPORT

OPEN
LABORATORY

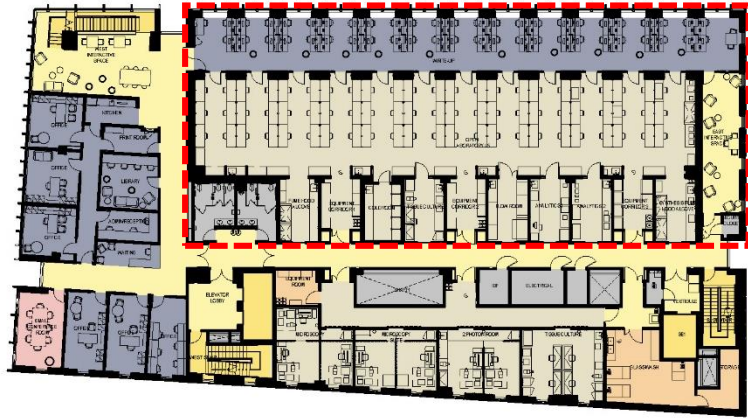
HSRF

OFFICES /
WRITE-UP

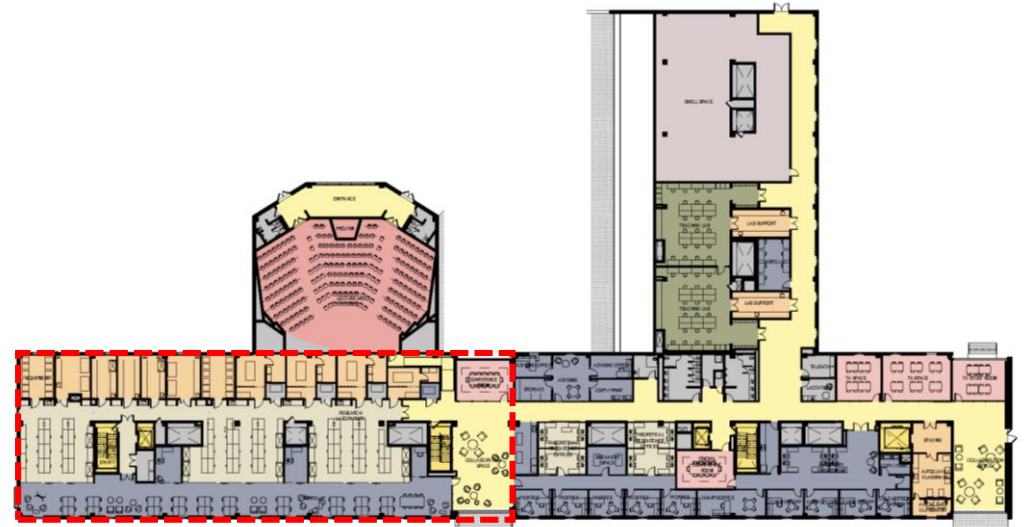
HIGH ENERGY

LOW ENERGY

LABORATORY PLANNING | PEER INSTITUTIONS



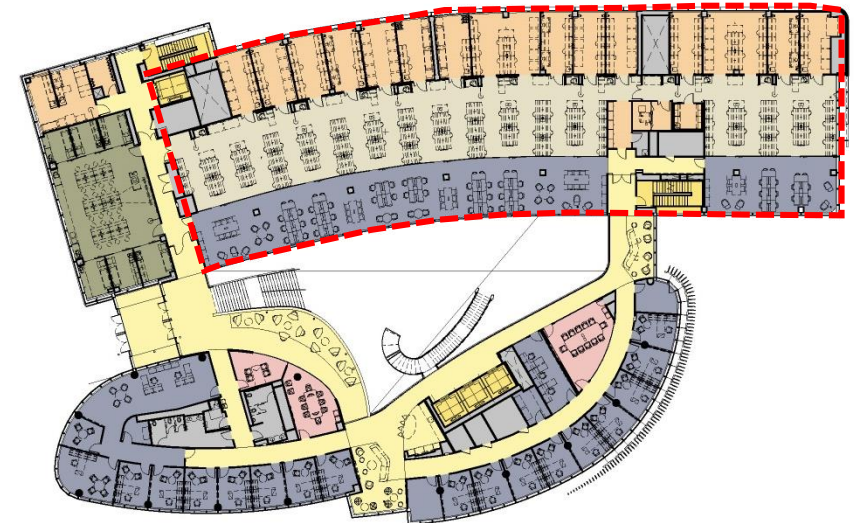
Boston University – Center for Integrated Life Sciences and Engineering (CILSE)



University of Texas at Austin – Welch Hall Renovation



Tufts University – Science and Engineering Complex (SEC)



Northeastern University – Integrated Science and Engineering Complex (ISEC)

CONCEPTUAL FLOOR PLAN

LCOM Research Laboratory Addition



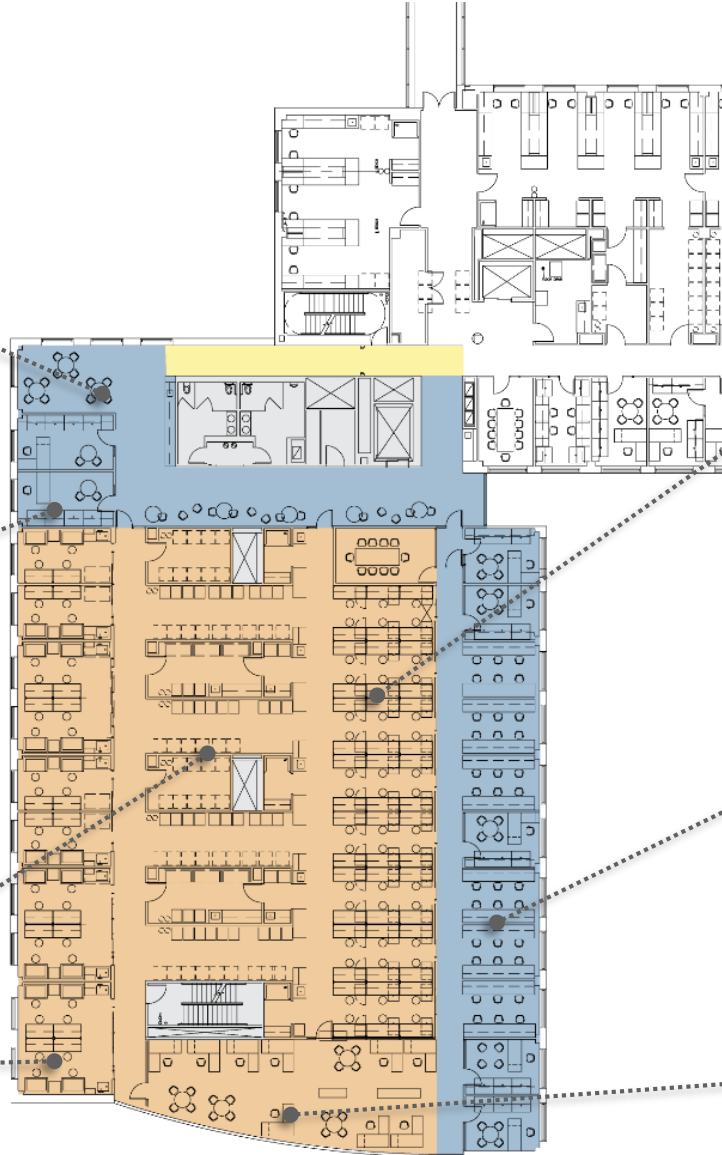
COLLABORATION



OFFICE



EQUIPMENT



BENCH



WRITE-UP



COMPUTATIONAL






Next Steps

How to Participate

- Town Hall
- Work with New Building Advisory Group and Given Advisory Group
- Website


www.med.uvm.edu/MedicalResearchComplex

 The University of Vermont
LARNER COLLEGE OF MEDICINE

University of Vermont | University of Vermont Medical Center

COLLEGE OF MEDICINE

About Us ▾ Admissions ▾ Education ▾ Research ▾ Community ▾ Administration ▾ News + Events ▾ Contact ▾



Proposed Medical Research Complex

A joint project between the Larner College of Medicine and the College of Arts and Sciences in support of the importance of the crucial work of our researchers and its impact on people worldwide.

Preliminary work has begun toward creating a medical research complex that will include a new building and a rehabilitated Given Building. These spaces will accommodate faculty and staff from both the Larner College of Medicine and the College of Arts and Sciences Department of Psychological Science. The proposed location for the new building is adjacent to the Health Sciences Research Facility (HSRF).

Architectural Team:

- Payette Associates, Boston
- Black River Design, Montpelier

Additional Information

[Provide Feedback](#)

[Watch the Proposed Medical Research Complex video](#)

Timeline:

Spring - Fall

- Schematic Design continues

October Board of Trustees Meeting

- Design and Finance presented for consideration

November 2019

- New Building Ground Breaking

May 2021

- New Building Completed


June 2021

- Given Renovations Begin

May 2024

- Given Renovations Completed

Click the image to view the larger rendering.



Questions?

