



# **Strategies to Shift SDOH and Increase Health Equity: Infant Mortality CoIN Action**

Kay Johnson, Co-Chair

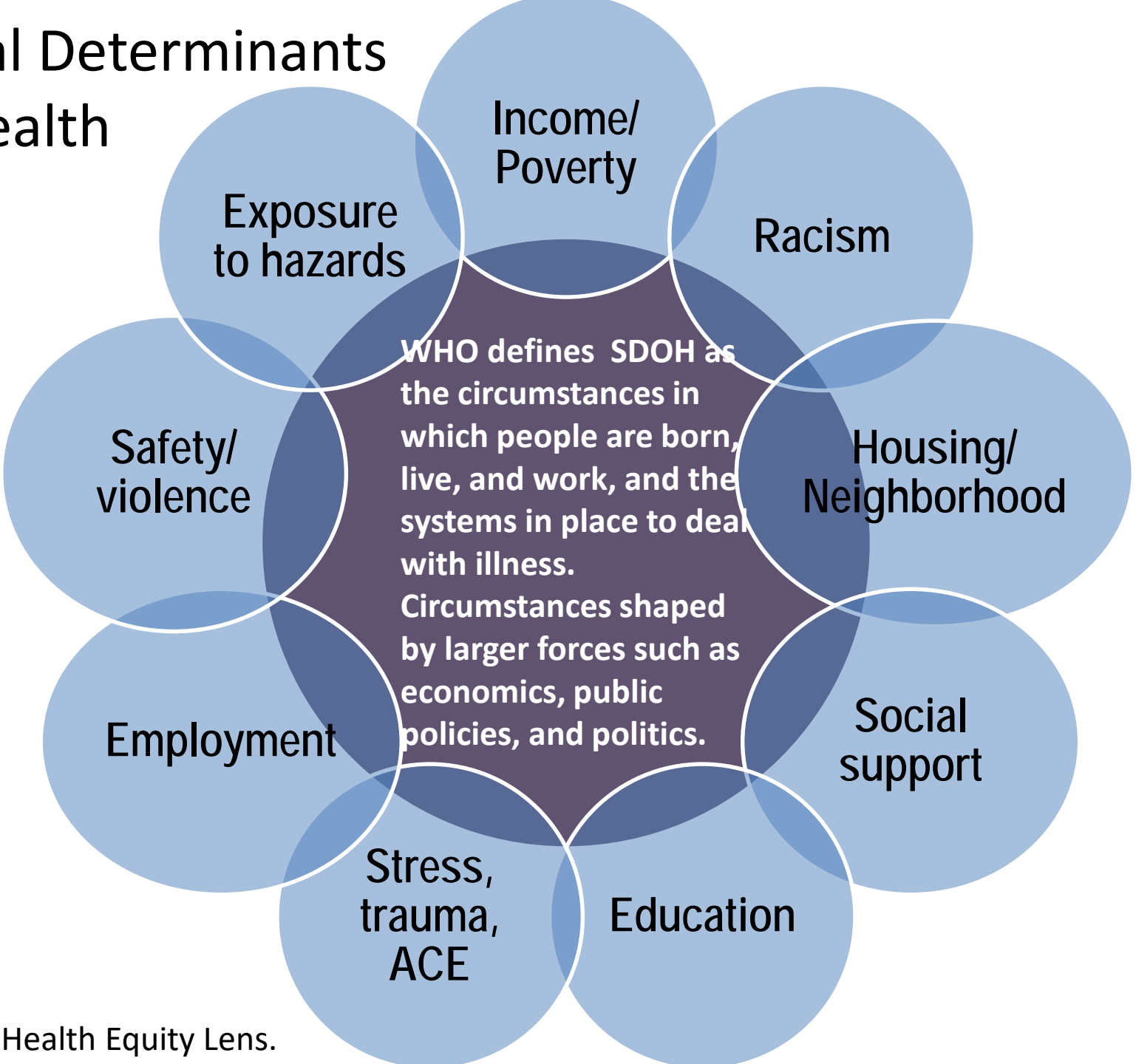
Social Determinants of Health Learning Network

Infant Mortality CoIN

Presentation to CHAMP meeting

October 5, 2017

# Social Determinants of Health



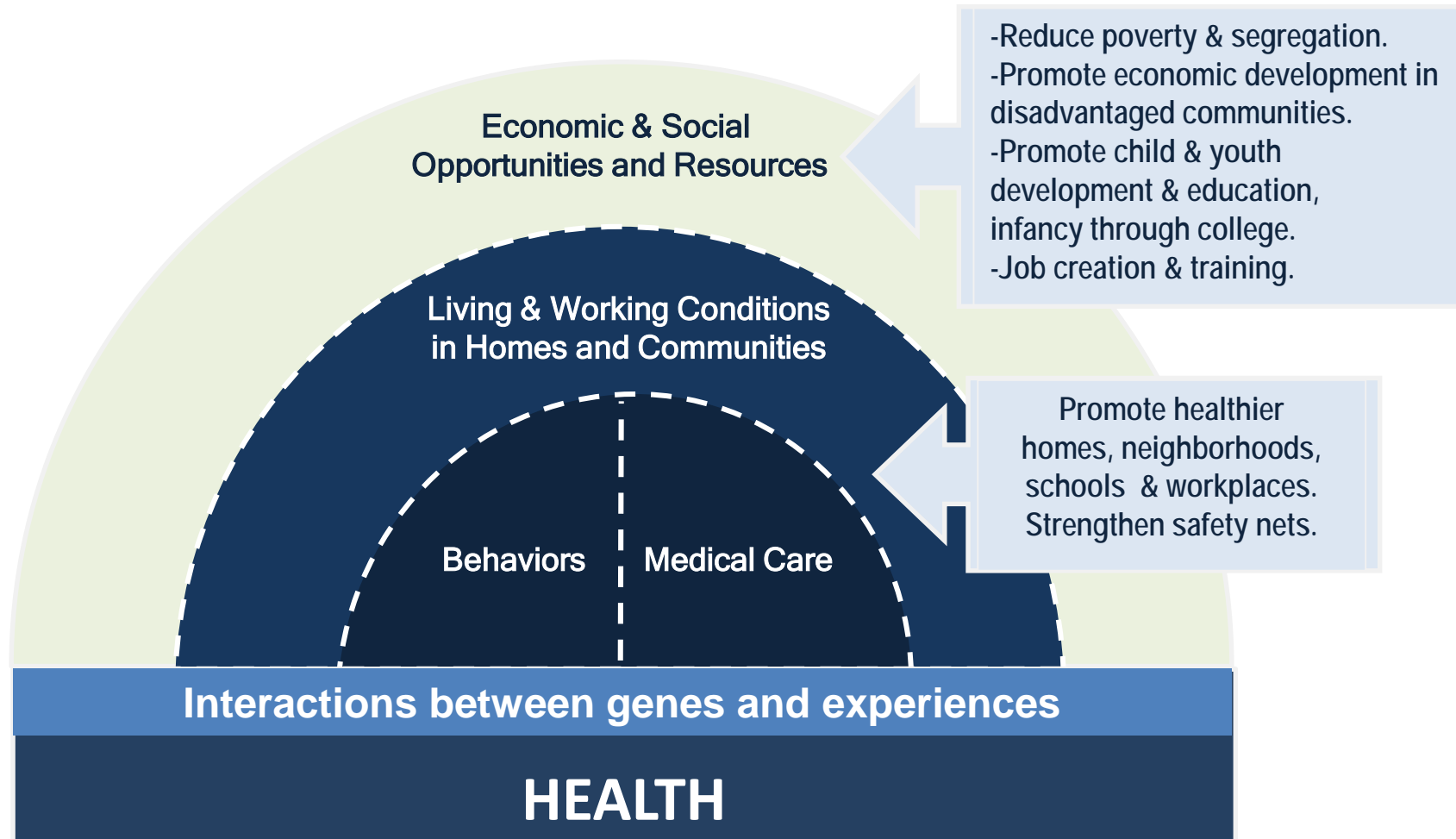
# Be clear about disparities, SDOH, and equity



- Not all health differences are health disparities.
- Health disparities are systematic, plausibly avoidable health differences according to income, race/ethnicity, religion, or socioeconomic position.
- Disparities in health and its (medical and social) determinants are the metric for assessing health equity.
- Health equity is the principle underlying a commitment to reducing disparities in health and its determinants.
- Health equity is social justice in health.

Source: Braveman et al. Health Disparities and Health Equity: The Issue Is Justice. *Am J Public Health*. 2011;101:S149–55.

# Achieving health equity by addressing SDOH



Source: P. Braveman et al. University of CA., San Francisco, adapted from version originally created for: *Overcoming obstacles to health: Report from the Robert Wood Johnson Foundation to the Commission to Build a Healthier America*. Robert Wood Foundation, 2008.

# WHO Framework for Tackling Social Determinants of Health and Infant Mortality ColIN SDOH Recommended Strategies

Context-specific strategies tackling both structural and intermediary determinants

## Key dimensions and directions for policy

Intersectoral action

Social participation and empowerment

Policies on stratification to reduce inequalities, mitigate stratification.

Policies to reduce exposures of disadvantaged people to health damaging factors.

Policies to reduce vulnerability and increase resiliency of disadvantaged people.

Policies to reduce unequal consequences of illness, in social, economic, and health terms.

### Cross-cutting Action

- Monitoring and follow up of health equity and SDOH.
- Evidence on interventions to tackle social determinants of health across government.
- Include health equity as a goal in health policy and other social policies (HEiAP).

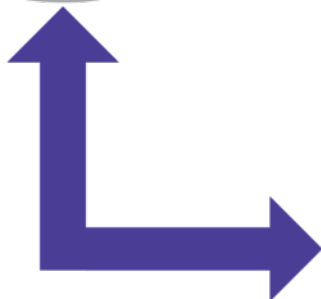
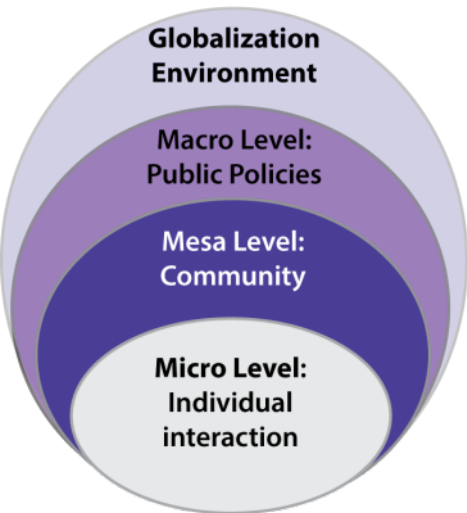
Taxes  
Paid family & medical leave  
Minimum wage  
Justice system reform

Housing  
ACEs, trauma & resilience initiatives  
Place-based initiatives

Job training, education, & career path  
Fatherhood/male initiatives  
Social networks for empowerment  
Medical-legal partnerships

Medicaid expansion  
QI on unequal treatment  
CLAS standards implementation  
Home visit enhancements  
Group strategies

Health equity in all policies  
Map risk/protective factors  
Monitor inequality & disparities  
Assess capacity



# SDOH Learning Network Approaches



1

Demonstrating the role of MCH state leaders in implementing SDOH and health equity strategies.

2

Defining and activating new partnerships, with traditional and non-traditional partners.

3

Building on initiatives for the over - all population, adding MCH per - spective or capacity.

4

Augmenting MCH programs and projects with SDOH and health equity strategies.

5

Piloting and implementing new as - sessments, tools, training, data, and policy approaches.