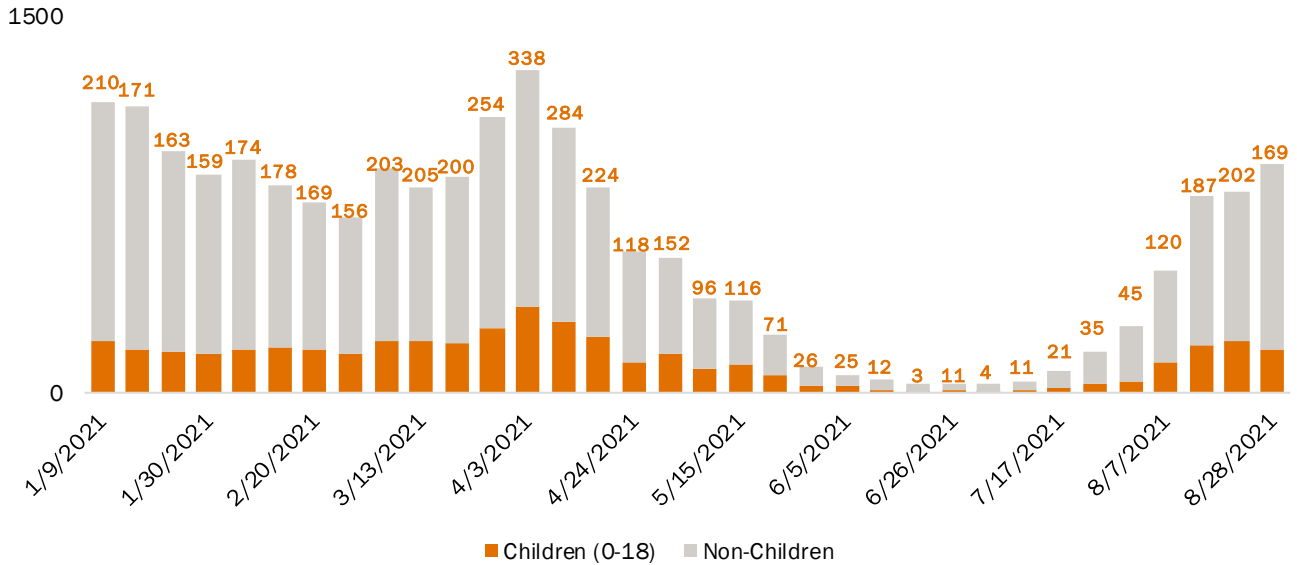
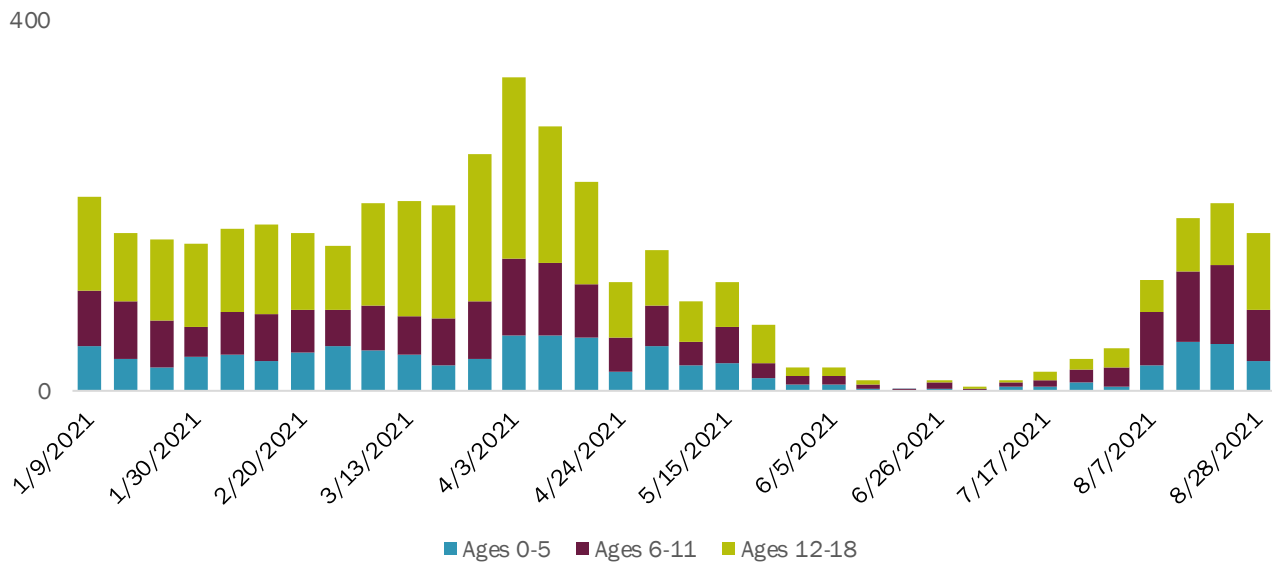


This brief reflects data as of August 28, 2021 at 7 pm (the last complete MMWR week). All rates are calculated per 10,000 people. Data is preliminary and subject to change.

Number of Cases by Week

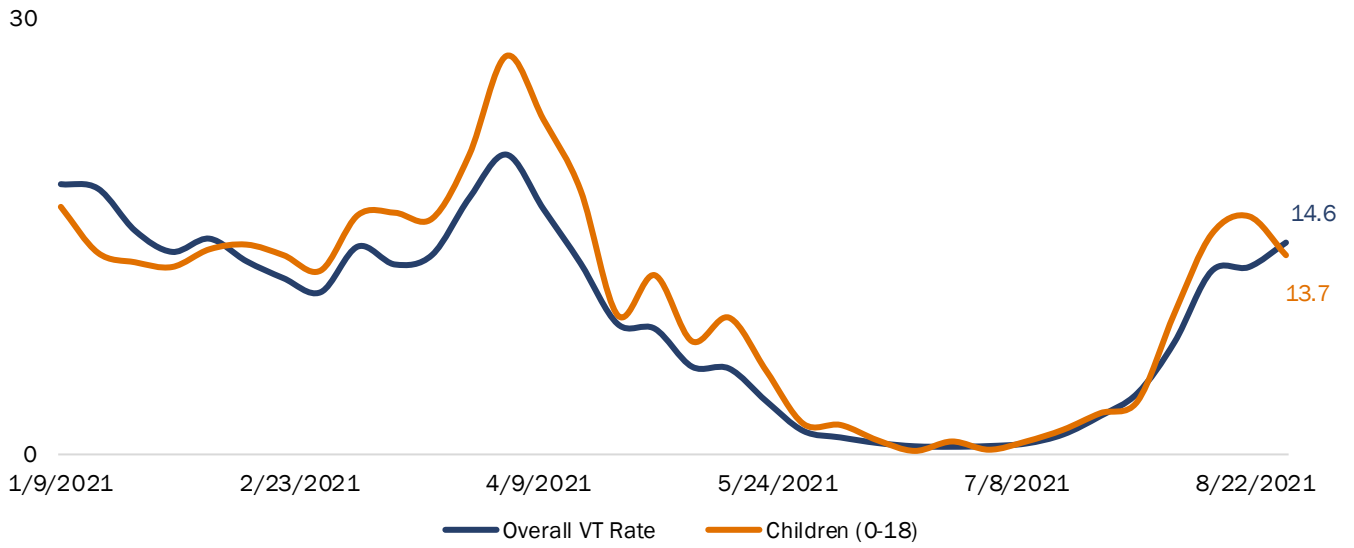


Number of Cases by Week by Age Category



COVID-19 Pediatric Cases

Rates by Week: Children vs. Overall Vermont Rate



Rates by Week by Age Category

