

Licensed Practical Nurses in Vermont 2012

2012 BOARD OF NURSING RELICENSURE SURVEY

Summary prepared by: University of Vermont AHEC Nursing Workforce Research, Planning, and Development
 For more details: Mary Val Palumbo, DNP, APRN, AHEC Director of Nursing Workforce Initiatives
 (802) 656-0023 or mpalumbo@uvm.edu

Summary

The number of Vermont Licensed Practical Nurse (LPN) graduates has doubled since 1995. At the same time there has been a 0.7% employment growth for LPNs, with a projected 1.7% growth rate by 2018. LPNs are likely to stay in Vermont and are well distributed throughout the state, including the most rural counties. LPNs are most likely to be employed in long-term care settings with a general trend of declining hospital employment. They earn close to the average weekly wage of a Vermonter, \$800/week. *Source: Bureau of Labor Statistics, 2011.*

Background

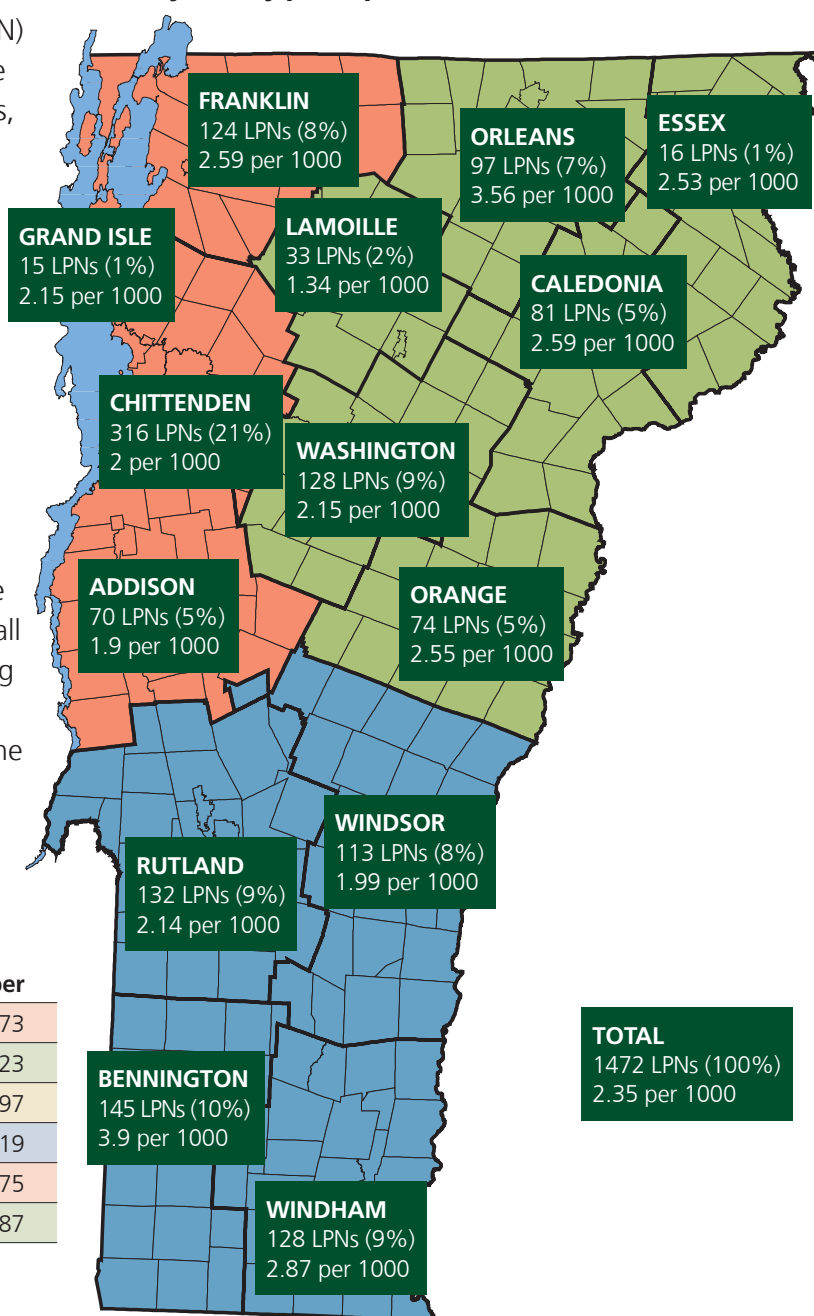
A summary of the LPN workforce in 2012 is part of the overall healthcare workforce analyses, which are critical to provide safe and effective health care for all Vermonters. LPNs primarily provide hands-on nursing care that is an essential component of health care, particularly for the elderly. This report summarizes the 2012 status of the Vermont LPN workforce using a variety of data sources.

Active Vermont LPN Licenses April 1, 2012

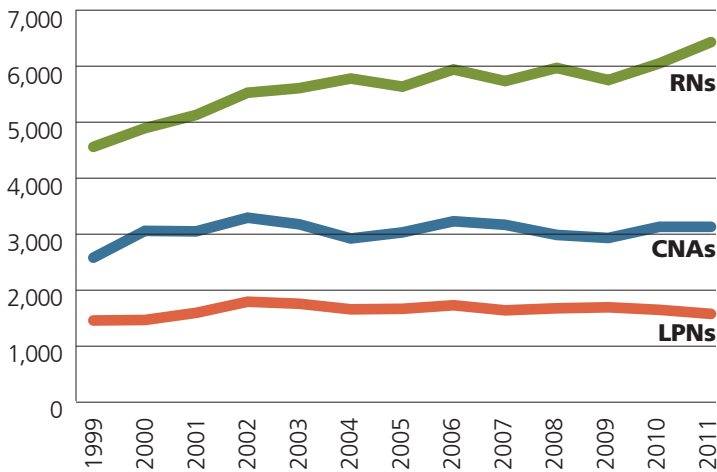
Residents of	Number
VT (82%)	1,473
NY	123
NH	97
MA	19
Other states	75
Total	1,787

VT Board of Nursing, 2012 & U.S. Census, 2010

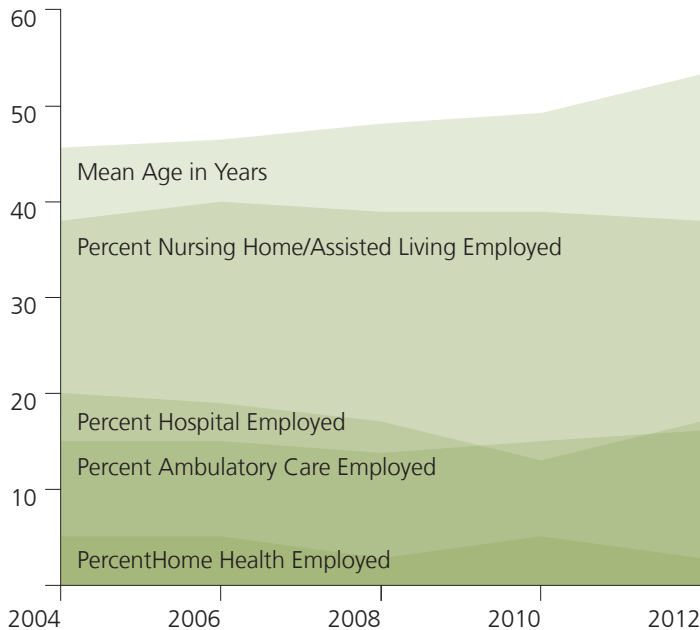
LPNs by County per Population



Nursing Employment Trends



Surveys 2004-2012*



* 249 respondents, 14% of Active VT LPNs, Caucasian 93%, Female 89%.

LPN Education

Vermont Tech is the only LPN educational program in Vermont.

- Vermont Tech has graduated 2,017 LPNs since 1995.
- There are 11 Vermont Tech sites providing LPN education around the state.
- In 2011-12, 667 applications were received, and 244 were qualified and accepted.
- There were 167 LPN graduates in June 2012 compared to 85 in 1995.
- Program completion rates have improved from 81% in 2005 to 91% in 2011.
- NCLEX pass rates have ranged from 93% to 100% for the past 8 years.
- At least 80% of the 2011 Vermont Tech graduates held active LPN licenses as of April 2012 (name changers not accounted for). *Source: Vermont Tech.*

Vermont LPN Occupational Projections

Employment of LPNs in 2008.....	1,547
Employment of LPNs in 2018 (projected)	1,834
Annual Growth Rate.....	1.7%
Mean Hourly Wage (2010).....	\$20.09

Source: U.S. Department of Labor

Comparison to Other States

Vermont has a low concentration of LPN employment compared to other states including New York, California, Texas, Florida, and Ohio; yet, higher than Maine and Wyoming.

State sampling per 1,000 jobs:

VT.....	4.82
ME	2.77
OH	8.40

Source: Bureau of Labor Statistics, 2011

For more details:

Contact Mary Val Palumbo, DNP, APRN, at (802) 656-0023 or mpalumbo@uvm.edu

