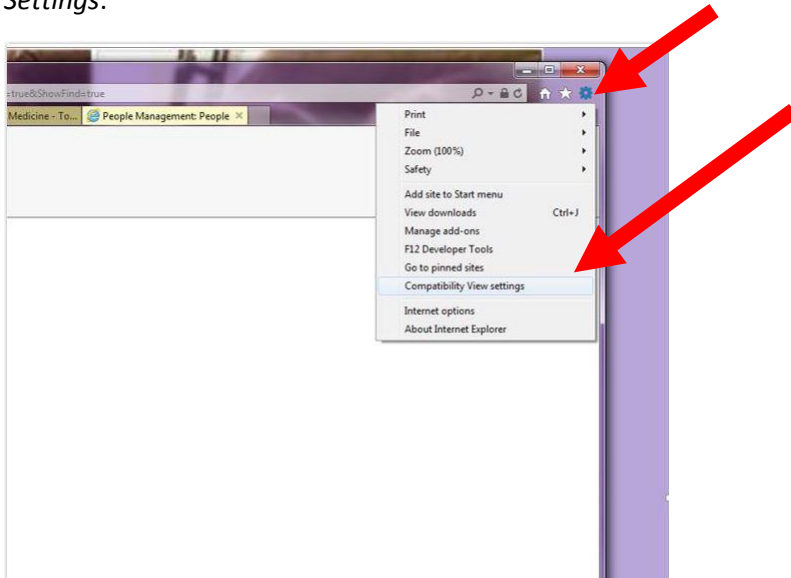
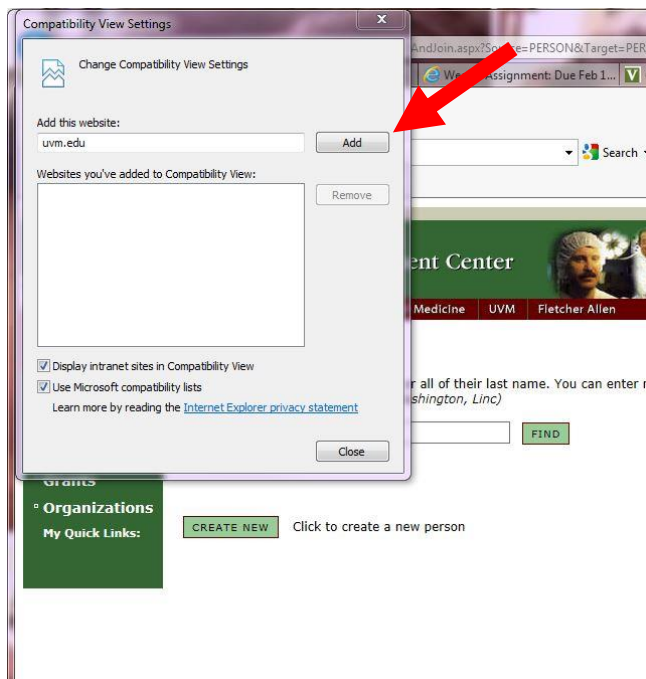


Using compatibility mode:

Click on the settings tool in the upper right corner of your web browser and select *Compatibility View Settings*:



Once the window pops up, click add to add uvm.edu:



Click close, and Biobuilder will now be in compatibility mode. You will have to do the reverse to take it out of compatibility mode (once you are logged out of Biobuilder and on a regular website).