



MICHIGAN MEDICINE
UNIVERSITY OF MICHIGAN

MICHIGAN HEALTH EQUITY VISITING CLERKSHIP

The Office of Health Equity and Inclusion (OHEI) at Michigan Medicine invites interested medical students to apply to the **Michigan Health Equity Visiting Clerkship Program**. Medical Students in their final year of medical school with a career interest in diversity, equity, and inclusion may apply for the 4 week visiting clerkship.

Eligibility

All 4th year medical students in good standing at an accredited US medical school who demonstrate a commitment to health equity and inclusion

Clerkship Details

- **July, August, September preferred. For specific dates, visit our website.**
- **Deadline:** Applications accepted until slots are filled.
- **Award Amount:** \$1,500
- **Awards Notification:** Awardees will be notified on a rolling basis.
- **Funding Process:** OHEI and Departments
- **Housing and accommodations is the sole responsibility of the applicant.**

Clerkship Alumni



VERSHA PLEASANT

MICHIGAN MEDICINE PGY1 OBGYN

“The positive support and involvement of the Office of Health Equity and Inclusion was such a key factor in my decision to come to the University of Michigan. During my visiting clerkship, I had the opportunity to enhance my clinical skills as well as share my interests in health disparities and its overlap with OB/GYN. I am tremendously grateful for their dedication to the mission of diversity and inclusivity of people from all backgrounds. “



TERRANCE PLEASANT

MICHIGAN MEDICINE PGY1 OTOLARYNGOLOGY

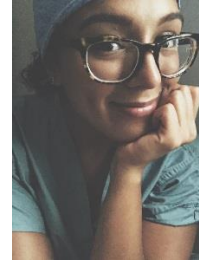
“During this month long rotation, I was challenged but at the same time supported academically, professionally and personally. The experience solidified my decision to pursue an Otolaryngology residency at the best program in the country.”



AISHA HARRIS
M4 GEORGETOWN

APPLYING TO FAMILY MEDICINE

"The mentorship opportunity and support from OHEI made the transition to such a large health system easier and more comfortable. I know I was able to grow as a medical student during my visiting clerkship and I hope to become an impactful family physician in the future. "



VALERIA VALBUENA

M4 UNIVERSITY OF ILLINOIS AT CHICAGO
APPLYING TO GENERAL SURGERY

"There are very few times in your career (unless you go blue for residency!) when you will be able to experience the degree of case complexity, mentorship, and stellar practice model which is the standard of care at the University of Michigan. OHEI has created a pathway for every self-motivated student to experience the incredible opportunities at UM. I am beyond thankful for the privilege of taking care of their patients and creating life-long professional relationships during my sub-internship"



Nelson Sofoluke

M4 The Commonwealth Medical College
Applying to Neurosurgery

"a great opportunity to learn about the programs at the University of Michigan. The mentorship I received during my experience will be invaluable as I move forward in my career."

Application Process

Visit our website <http://www.med.umich.edu/ohei/alumni/clerkship.html>

Complete the following steps:

Step 1: Complete VSAS Application Form

For additional information about **visiting student requirements**

Step 2: Submit the Supplemental Application to the Office for Health Equity and Inclusion. All students must complete the supplemental application for the office for Health Equity and Inclusion.

Step 3: Review Process Once you have submitted your application, you will receive a confirmation email. Applications are reviewed individually and awarded on a rolling basis.

The clerkship experience:

1. Accepted students will have orientation at a pre-clerkship dinner along with faculty, house officers and students interested in health equity.
2. Provide an enriching clinical rotation while increasing student's awareness of a career in academic medicine.
3. Faculty Mentor that will provide career advice, coaching in your clinical department, assistance with navigating the health system for visiting students to be successful during your rotation.
4. Provide a better understanding of health disparities and social determinants of health.
5. Provide networking opportunities with faculty, house officers and other medical students.

[Learn more about the Health Equity Visiting clerkship here!](http://www.med.umich.edu/ohei/alumni/clerkship.html)

Contact Information:

Office for Health Equity and Inclusion

(734) 764-8185

www.med.umich.edu/ohei

Clarissa Love (Project Manager)

clarfree@umich.edu

Marcia Perry (Faculty Lead)

marciap@umich.edu

<http://www.med.umich.edu/ohei/alumni/clerkship.html>