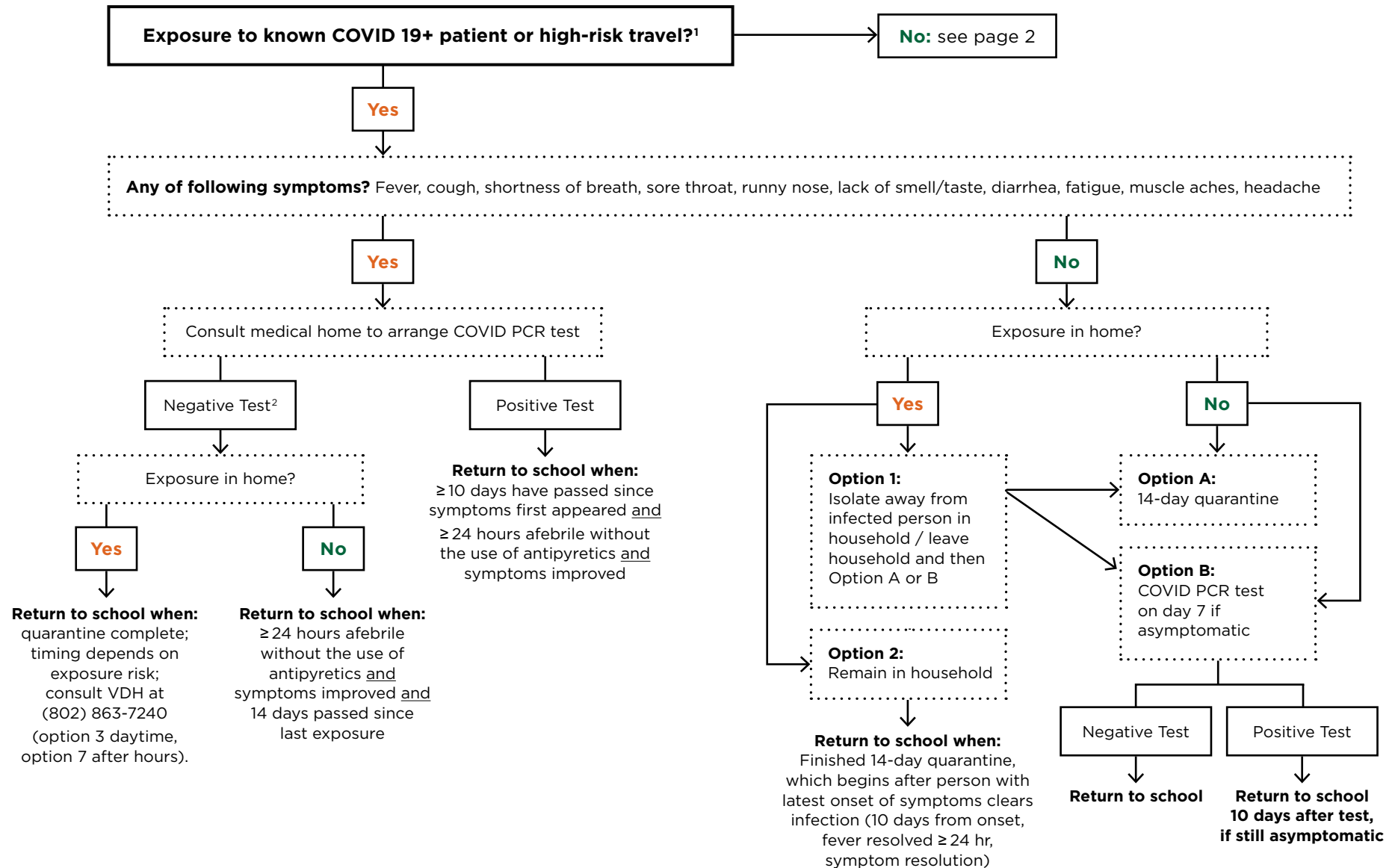


COVID-19 in Pediatric Patients (Pre-K - Grade 12)

Triage, Evaluation, Testing and Return to School*

*This algorithm was developed in the setting of Vermont's low prevalence of SARS-CoV-2 Virus. This is a changing environment, and as we gain new knowledge about this virus, expect adaptations

Version 1, current as of August 26th, 2020



¹Exposure/travel: had close contact (within 6 feet of an infected person for at least 15 minutes) with a person with confirmed COVID-19; or traveled to or lived in an area where the local, Tribal, territorial, or state health department is reporting large number of cases of COVID-19 <https://accd.vermont.gov/covid-19/restart/cross-state-travel>. High-risk travel also includes travel to a "green" area via public transportation (e.g., airplane, bus)

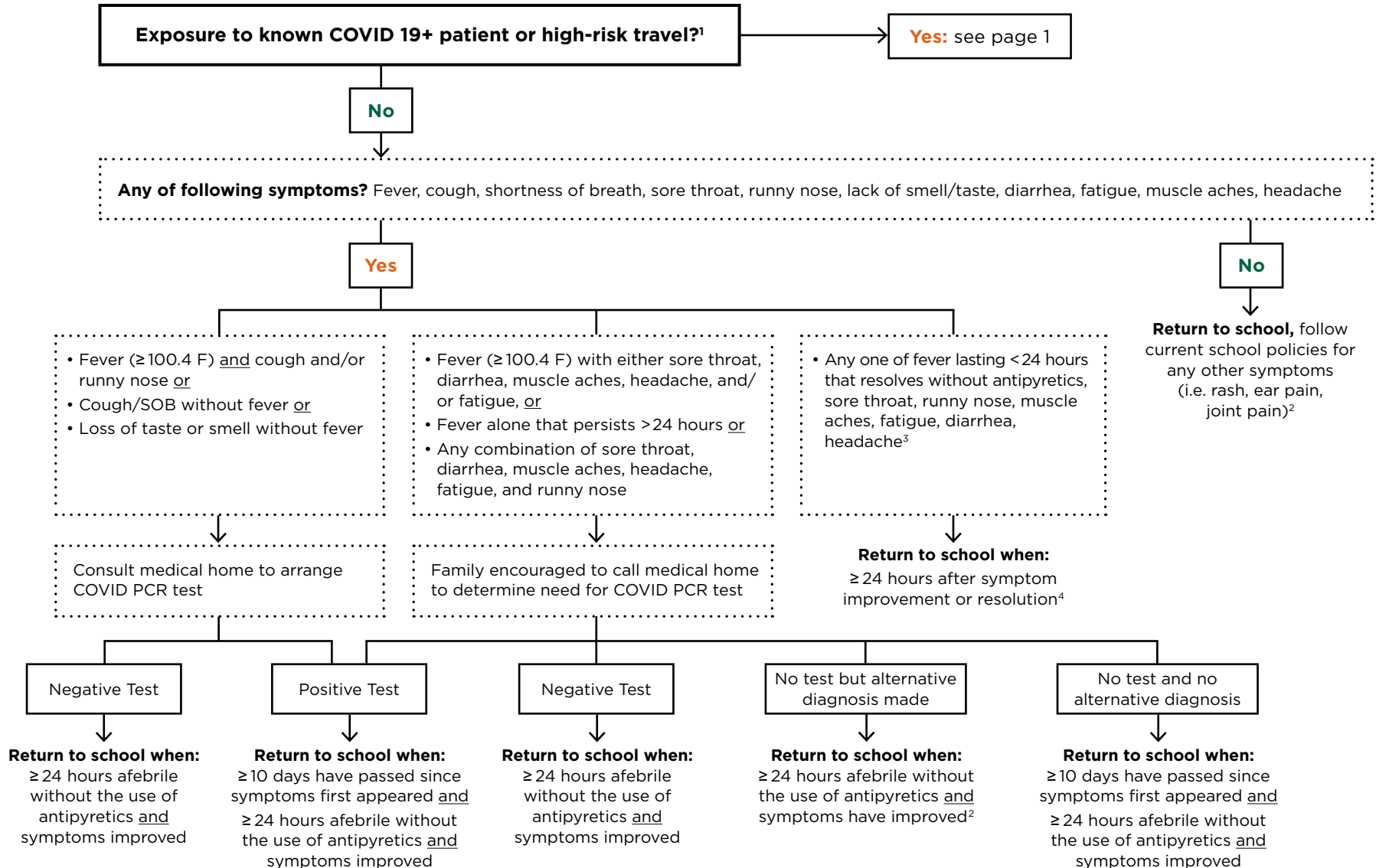
²If highly suspect COVID, may repeat test in 24 hours

COVID-19 in Pediatric Patients (Pre-K - Grade 12)

Triage, Evaluation, Testing and Return to School*

*This algorithm was developed in the setting of Vermont's low prevalence of SARS-CoV-2 Virus. This is a changing environment, and as we gain new knowledge about this virus, expect adaptations

Version 1, current as of August 26th, 2020



¹Exposure/travel: had close contact (within 6 feet of an infected person for at least 15 minutes) with a person with confirmed COVID-19; or traveled to or lived in an area where the local, Tribal, territorial, or state health department is reporting large number of cases of COVID-19 <https://accd.vermont.gov/covid-19/restart/cross-state-travel>. High-risk travel also includes travel to a "green" area via public transportation (e.g., airplane, bus)

²Consult usual infectious disease protocols (e.g. Red Book or Caring for Our Children)

³Rash alone, including purple toes, is not currently a CDC listed symptom of acute COVID-19 infection

⁴Parent/caregivers may consult medical home for persistent symptoms